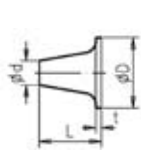
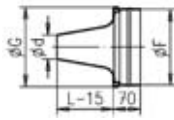




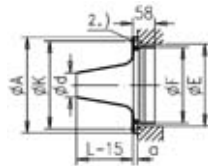
DIMENSIONS · FIXED NOZZLES



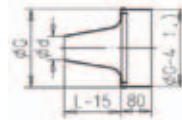
WDA



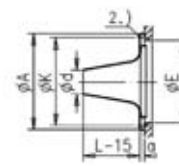
WDA-F



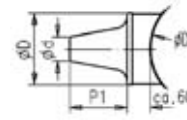
WDA-D



WDA-W



WDA-K



WDA-RA

SIZE	øD	øA	øE	øF	øG	øK	øS	a	L	t	P1	øD1	øD
31	31,5	150	115	98	108	130	155	9	87	16	71	81	90
40	40	150	115	98	108	130	155	9	63	12	51	81	90
45	45	150	115	98	108	130	155	9	49	10	39	200	90
50	50	150	115	98	108	130	155	9	34,5	10	24,5	200	90
63	63	250	215	198	208	230	255	12	163	14	149	181	185
80	80	250	215	198	208	230	255	12	114	18	96	181	185
87	87	250	215	198	208	230	255	12	95	14	81	800	185
100	100	250	215	198	208	230	255	12	58	12	46	800	185
125	125	450	415	398	408	430	460	12	313	12	180	356	360
160	160	450	415	398	408	430	460	12	211	12	200	356	360
175	175	450	415	398	408	430	460	12	168	14	156	800	360
200	200	450	415	398	408	430	460	12	99	12	87	800	360
400	400	845	770	752	808	815	860	20	340	20	320	x	724

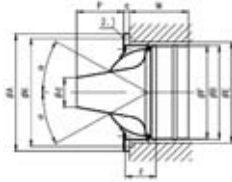
WDA: Nozzle only (supplied without swivel device)

WDA-F: For connection to flexible ducts (mounting with swivel device only possible if reducer is used)

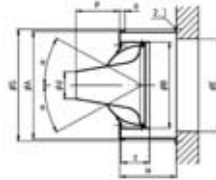
WDA-W: For connection to rigid spiral conductor

WDA-D: For mounting in ceilings and walls

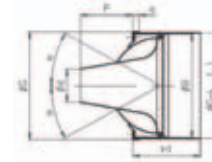
DIMENSIONS · SWIVEL NOZZLES



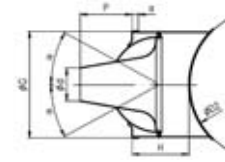
WDA-F/D-SK



WDA-K-SK



WDA-W-SK



WDA-W-RA-SK

SIZE	øD	øA	øE	øF	øG	øK	øS	a	α	P	H	H1	M	øB	z	øD2
31	31,5	150	115	98	108	130	155	9	28	53	60	100	72	100	45	104
40	40	150	115	98	108	130	155	9	28	25	60	100	72	100	45	-
45	45	150	115	98	108	130	155	9	28	14	60	100	72	100	45	315
63	63	250	215	198	208	230	255	12	25	104	130	170	125	200	65	200
80	80	250	215	198	208	230	255	12	25	55	130	170	125	200	65	200
87	87	250	215	198	208	230	255	12	25	36	130	170	125	200	65	1200
100	100	250	215	198	208	230	255	12	20	29	130	170	125	200	65	1200
125	125	450	415	398	408	430	460	12	30	92	200	240	155	392	90	400
160	160	450	415	398	408	430	460	12	28	110	200	240	155	392	90	400
175	175	450	415	398	408	430	460	12	28	71	200	240	155	392	90	1200
200	200	450	415	398	408	430	460	12	22	65	200	240	155	392	90	1200
400	400	845	770	752	808	815	860	20	20	110	335	375	375	755	230	x

WDA-K: For mounting in rectangular ducts

WDA-RA: For connection to circular duct

WDA-W-RA: For connection to circular duct



SELECTION TABLE

SIZE	Flow	Sound power	Pressure loss	Av. vel.	Throw	Vertical drop	Max. Penetration	Temp. coeff.	Δt_o	Induction ratio
	(m ³ /h)	L _{wa} [dB(A)]	ΔP_t (Pa)	(m/s)	x (m)	y (m)	Y _h (m)	$\Delta t_x / \Delta t_o$		
63	125	20	89	0,25	7,00	0,88	7,97	0,048	10	34,25
	150	25	128	0,25	8,00	0,91	9,57	0,042	10	39,11
	175	30	175	0,25	9,00	1,20	12,00	0,035	10	60,00
80	175	20	69	0,25	7,00	0,91	7,27	0,059	10	27,70
	225	25	109	0,25	8,00	1,20	10,00	0,045	10	38,00
	250	30	140	0,25	9,00	1,00	12,00	0,041	10	45,00
87	200	20	60	0,25	7,00	1,10	7,17	0,063	10	27,79
	250	25	94	0,25	9,00	1,54	8,96	0,049	10	31,82
	350	30	183	0,25	12,00	2,00	15,00	0,030	10	60,00
100	325	28	92	0,25	10,00	1,70	10,10	0,050	10	31,67
	400	35	140	0,25	13,00	2,65	12,44	0,038	10	41,13
	450	40	175	0,25	15,00	2,75	15,00	0,030	10	60,00
125	550	28	103	0,25	13,00	2,63	14,70	0,047	10	35,09
	725	35	178	0,25	18,00	4,00	19,37	0,034	10	48,03
	890	40	266	0,25	21,00	4,19	20,00	0,030	10	55,73
160	750	28	76	0,25	13,00	3,28	13,38	0,061	10	27,91
	1100	35	135	0,25	18,00	4,82	17,84	0,044	10	38,18
	1500	40	227	0,25	22,00	5,15	20,00	0,036	10	46,13

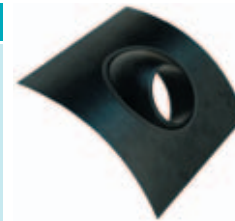
SELECTION TABLE

SIZE	Flow (m ³ /h)	Sound power Lwa [dB(A)]	Pressure loss Δ Pt (Pa)	Av. vel. (m/s)	Throw x (m)	Vertical drop y (m)	Max. Penetration Yh (m)	Temp. coeff. Δ tx / Δ to	Δ to	Induction ratio
175	850	28	69	0,25	13,00	3,13	13,33	0,061	10	27,93
	1100	35	115	0,25	18,00	5,00	17,26	0,044	10	38,20
	1500	40	214	0,25	24,00	6,38	20,00	0,034	10	50,38
200	1000	28	57	0,25	14,00	4,70	12,35	0,065	10	25,65
	1300	35	96	0,25	18,00	5,90	16,03	0,050	10	32,72
	1700	40	164	0,25	24,00	8,18	20,00	0,038	10	43,24

PROJECT SPECIFICATION

Model WDA_ / SCH Ø_ RAL t.b.d.

SCHAKO long throw nozzle c/w swivel head which can be adjusted approx 30 degrees in all directions. Can be used for direct duct mounting c/w saddle bracket or standard wall mounting. A cover plate is available for secret fixing as well as two different induction plates for adjusting throws and air patterns. Can be painted in any RAL colour.



WDA-RR Ø



WDA-D/ SCH Ø