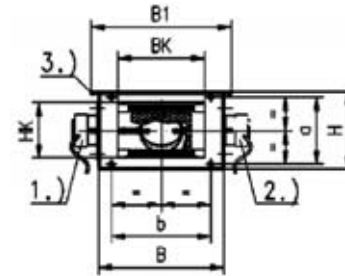
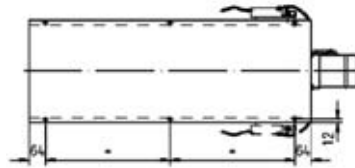
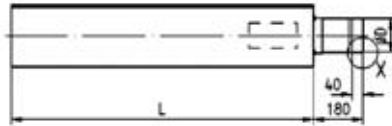




DIMENSIONS



EBE-Z

1.) Right execution
2.) Left execution

SIZE	B SB	B1 SB1	DB	DB1	BK	H SH	DH	HK	L	SL	øD	a	b
100	320	360	400	440	210	200	280	140	1100	1000	98	174	244
125	360	400	440	480	250	220	300	160	1100	1000	123	194	286
160	480	520	560	600	370	230	310	170	1100	1000	158	204	399
200	580	620	660	700	470	260	340	200	1400	1000	198	234	504
250	700	740	780	820	590	290	370	230	1500	1500	248	259	624
315	880	920	960	1000	770	340	420	280	1500	1500	313	309	804
400	1000	1040	1080	1120	890	440	520	385	1835	1500	398	409	924



SELECTION TABLE

SIZE ø (mm)	Minimum flow (2 m/s)		Maximum flow (12 m/s)	
	(m ³ /h)	(l/s)	(m ³ /h)	(l/s)
100	57	16	339	94
125	88	25	530	147
160	145	40	869	241
200	226	63	1357	377
225	286	80	1718	477
250	353	98	2121	589
280	443	123	2660	739
315	561	156	3367	935
355	713	198	4276	1188
400	905	251	5429	1506

For Belimo / Siemens motorisation

PROJECT SPECIFICATION

Model EBE-Z

SCHAKO variable airflow regulator for high speed systems, model EBE-Z_ mm for pressure differences of 50 to 1,000 Pa, allowable ambient temperature of between 0° and 55° and for duct speeds of 2 to 12 m/sec. Fitted with effective airflow measurement device by means of high sensitivity measurement crosspiece with 12 measurement points distributed along two diameters at 90°. Pressure sensor, electronic regulator and electric servomotor, 24 V voltage and DC 0_10 V control compatible with regulation system. Galvanised steel plate shell apt for connection to ducts that comply to DIN 24145 standard, lined inside with mineral wool and perforated plate. Damper blade in galvanised steel plate with rubber lip seal retainer for airtight execution. Measurement crosspiece in extruded aluminium profile.

