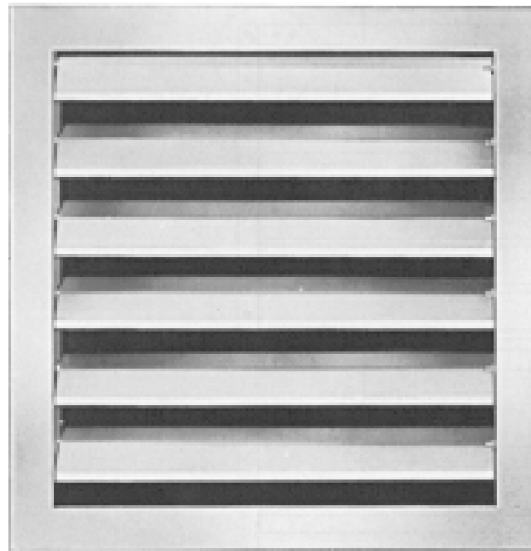




Excess Pressure Flap ÜK



Ferdinand Schad KG
Steigstraße 25-27
D-78600 Kolbingen
Telephone +49 (0) 74 63 - 980 - 0
Fax +49 (0) 74 63 - 980 - 200
info@schako.de
www.schako.de

Excess Pressure Flap ÜK

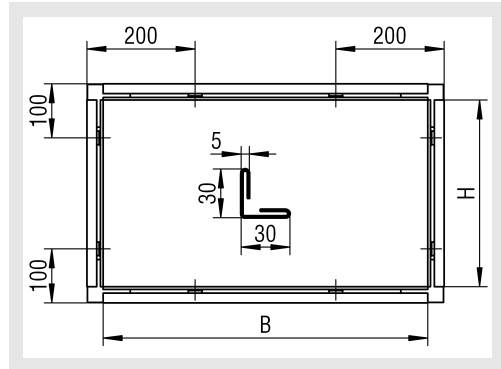
Contents

Description	3
Construction	3
Model	3
Accessories	3
Models and dimensions	3
Dimensions	3
Dimensions of accessories	4
Installation	4
Technical Data	4
Pressure loss and noise level	4
Legend	4
Order details	5
Specification texts	5

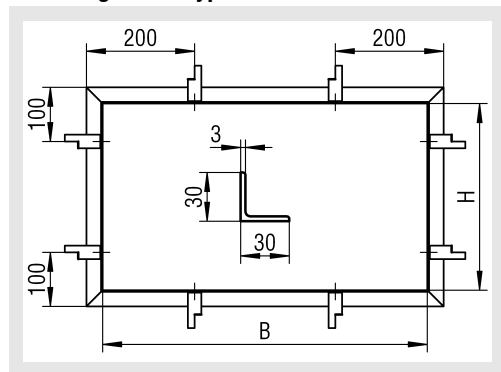
Excess Pressure Flap ÜK

Dimensions of accessories

Mounting frame type ER1



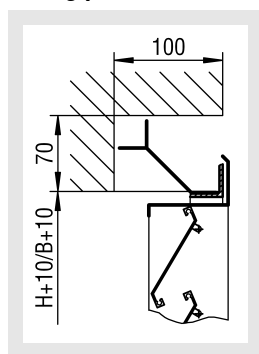
Mounting frame type ER2



(H > 1000 mm)

Installation

Fitting position with assembly frame type ER2



Number of wall anchors

Height:

260 - 1005 mm → 2 wall anchors per side

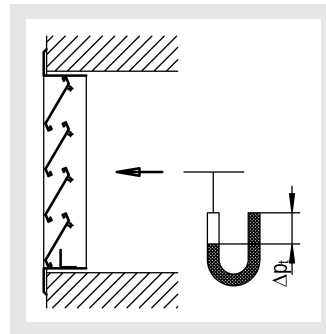
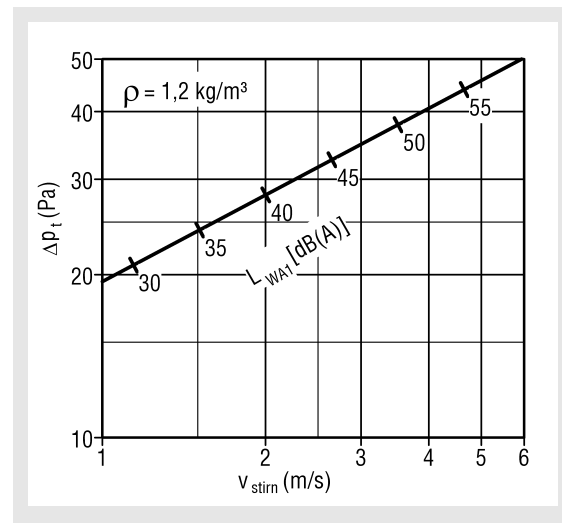
Width:

≤ 800 mm → no wall anchors

> 800 mm → 2 wall anchors per side

Technical Data

Pressure loss and noise level



A _{Stirn} (m ²)	0,1	0,2	0,4	0,6	0,8	1,0
CF (-)	-6	-3	0	+1,8	+3	+4

$$L_{WA} = L_{WA1} + CF$$

Legend

Δp_t (Pa) = Pressure loss

v_{Stirn} (m/s) = Intake velocity, blower stream velocity, out-flow velocity, relative to A_{Stirn} = 0.4 m²

A_{Stirn} (m²) = Face area

L_{WA} [dB(A)] = A-weighted sound power level
(L_{WA} = L_{WA1} + CF)

L_{WA1} [dB(A)] = A-rated sound power level, relative to
A_{Stirn} = 0.4 m²

ρ (kg/m³) = Density

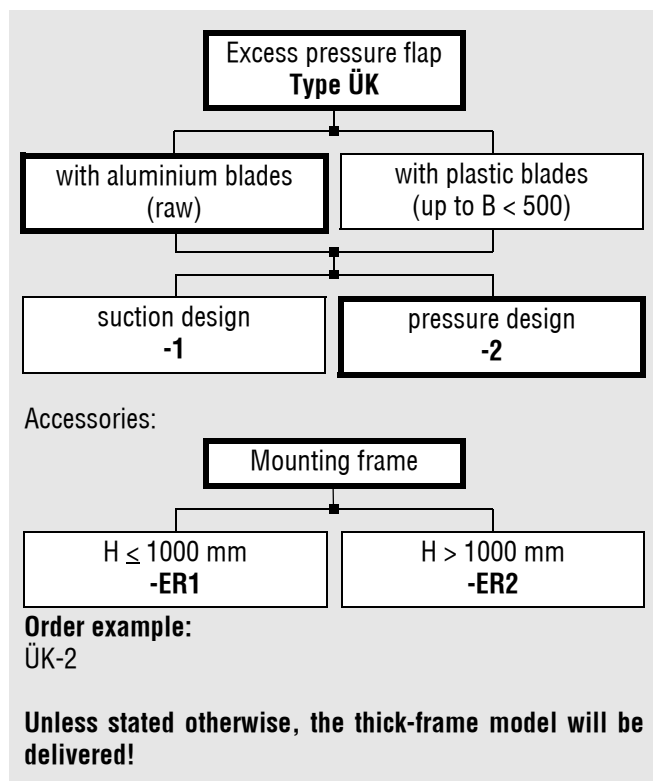
CF (-) = Correction factor

B (mm) =

H (mm) = Height

Excess Pressure Flap ÜK

Order details



Specification texts

Self-opening and -closing excess pressure flap type ÜK with aluminium blade profiles (natural aluminium), in intake-operated or pressure-operated design (standard). Frame made of galvanised sheet steel.

Product: SCHAKO type ÜK

- with plastic blades (up to $B \leq 500$ mm)

Accessories:

- with galvanised sheet steel assembly frame
 - ER1 ($H \leq 1000$ mm)
 - ER2 ($H > 1000$ mm)