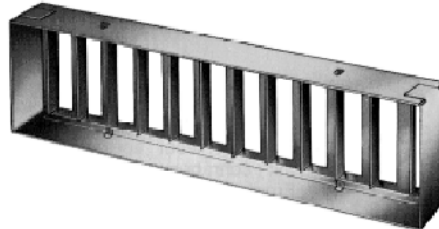
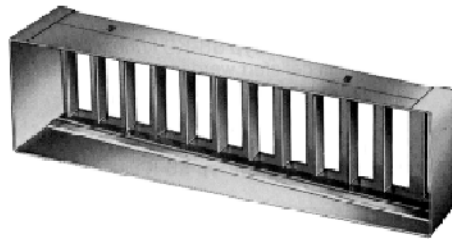
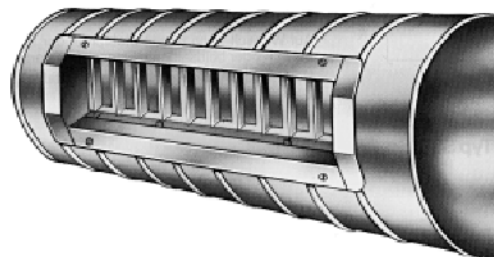


# Hit-and-miss damper

## SS-KR / SS-KS / SS-K



SCHAKO KG  
Steigstraße 25-27  
D-78600 Kolbingen  
Telephone +49 (0) 74 63 - 980 - 0  
Telefax 0 74 63 - 980 - 200  
[info@schako.de](mailto:info@schako.de)  
[www.schako.de](http://www.schako.de)

## Hit-and-miss damper SS-K / KS / KR

### Contents

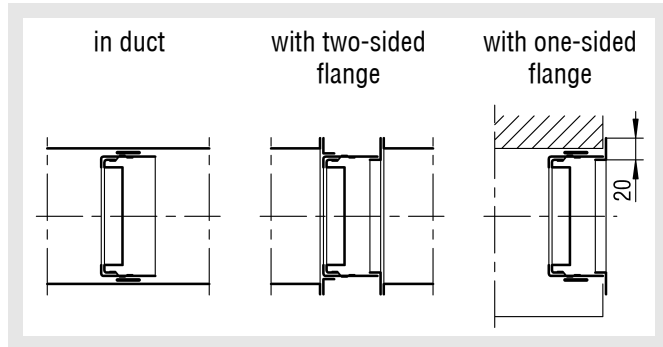
<b>Description</b> .....	<b>3</b>
Construction .....	3
Model .....	3
Accessories .....	3
<b>Models and dimensions</b> .....	<b>3</b>
Dimensions .....	3
Installation .....	4
<b>Specification texts</b> .....	<b>4</b>



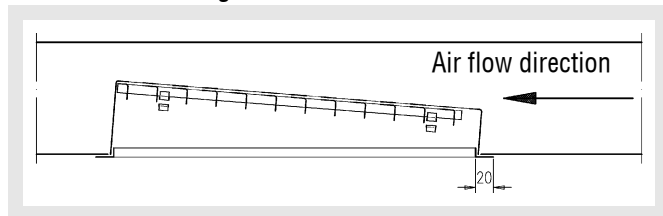
## Hit-and-Miss Damper Models SS-K / KS / KR

### Installation

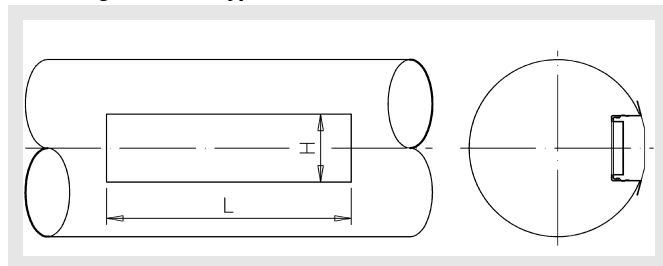
#### Mounting options type SS-K



#### Mounting options type SS-KS with one-sided flange



#### Mounting situation type SS-KR



#### Duct diameter

SS-KR Grille height	øD		
	min.	ideal	max.
65	140	250	400
115	300	500	800
215	600	750	1250
315	900	1000	1250

The grille frames only make optimum contact when the ideal duct diameter is used.

#### Duct diameter

The curved flange and the four height dimensions, apart from providing high stability and torsional rigidity, allow optimum adaptation of the hit-and-miss damper type SS-KR to sheet metal and spiral ductwork. The selection of the grille height depends on the duct diameters shown in the table.

### Specification texts

Hit-and-miss damper type SS-K consisting of box and damper made of electrolytically galvanised sheet steel, with the ends of the air flow straightener turned upward, for volumetric flow control.

Product: SCHAKO type **SS-K**

- Type SS-KS in diagonal box  
Fabrikat: SCHAKO Typ **SS-KS**
- Type SS-KR to fit into sheet steel / folded rolled pipe  
Product: SCHAKO type **SS-KR**

#### Accessories:

- Flange
  - One-sided (SS-K / SS-KS)
  - Two-sided (SS-K)