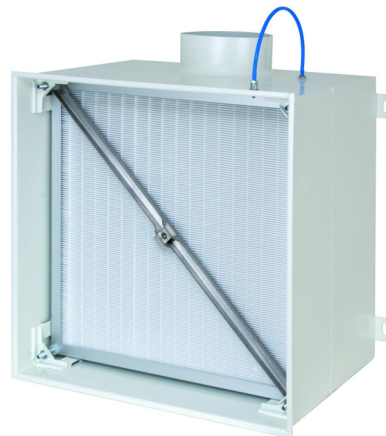
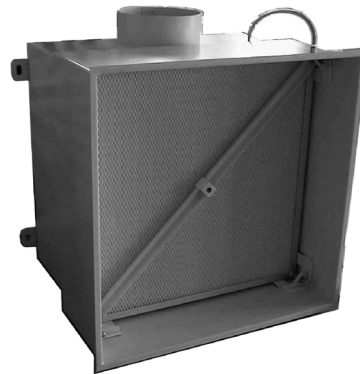
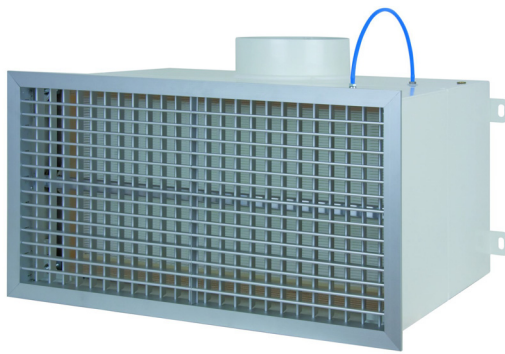


Filter Installation Instructions

FKU, FK-FF, FK-FD, FKU-W



Filter Installation Instructions Models FKU, FK-FF, FK-FD, FKU-W

Contents

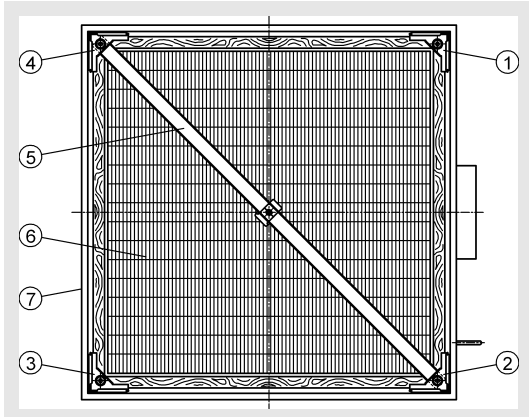
Description	3
FKU	3
FK-FF	3
FK-FD	4
FKU-W	4

Filter Installation Instructions Models FKU, FK-FF, FK-FD, FKU-W

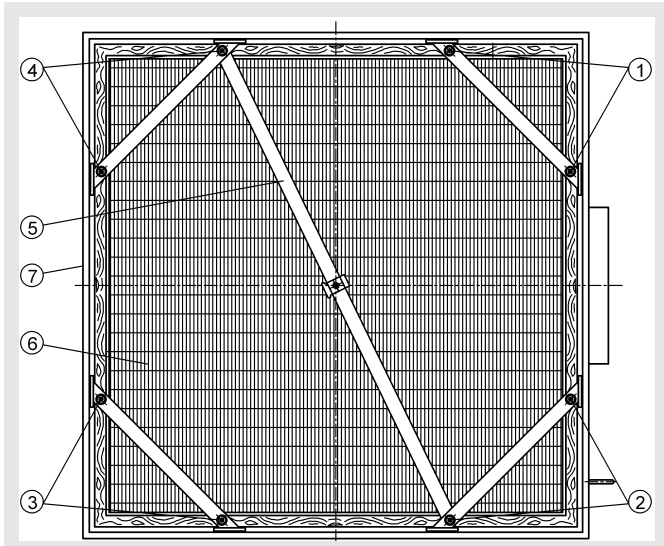
Description

FKU

Size 400-650



Size 800

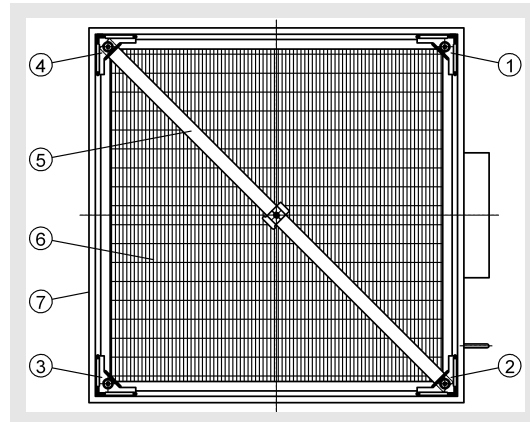


Press the particle filter unit (pos. 6) with the fluid seal upwards into the filter housing (pos. 7). Take care that the filter material is not irreparably damaged.

The filter unit can be easily locked using two diagonal filter clamps (pos. 1 and 3). Next, the VM pole brace (pos. 5) is inserted and fastened using the other two filter clamps (pos. 2 and 4). Care must be taken that the filter clamps are at first tightened only slightly cross-wise (e.g. in the sequence filter clamps 1, 3, 2, 4). After tightening the filter clamps slightly, they can be tightened properly, again cross-wise and evenly until the filter unit has a tight fit. Care must be taken that the filter clamps are tightened to 4 Nm maximum.

If required, a seal leakage test can be carried out before mounting the air diffusers.

FK-FF



Press the particle filter unit (pos. 6) with the fluid seal pointing upwards into the filter housing (pos. 7). Take care that the filter material is not irreparably damaged.

The filter unit can be easily locked using two diagonal filter clamps (pos. 1 and 3). Next, the VM pole brace (pos. 5) must be inserted and fastened using the other two filter clamps (pos. 2 and 4). Care must be taken that the filter clamps are at first tightened only slightly cross-wise (e.g. in the sequence filter clamps 1, 3, 2, 4). After tightening the filter clamps slightly, they can be tightened properly, again cross-wise and evenly until the filter unit has a tight fit. Care must be taken that the filter clamps are tightened to 2 Nm maximum.

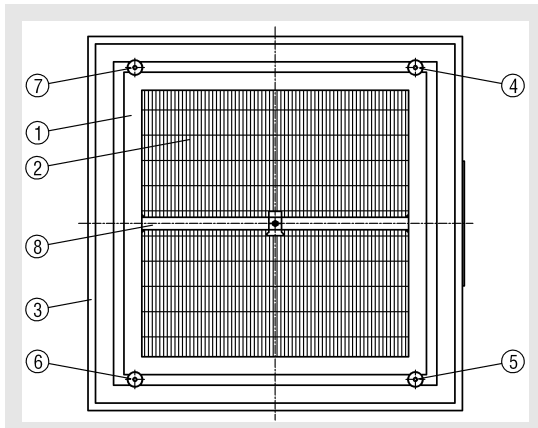
A buffer prevents the immersing sword from severing the fluid.

Attention!

Before the particle filter cell can be inserted, the shipping brace clamped by means of the filter clamps must be removed (sizes 500-800 only)!

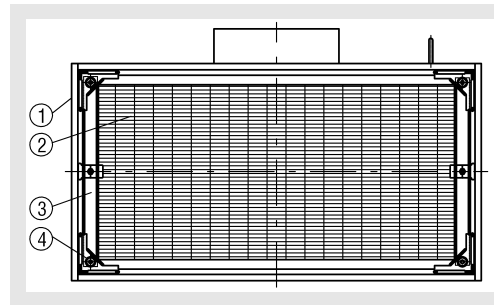
Filter Installation Instructions Models FKU, FK-FF, FK-FD, FKU-W

FK-FD



The fluid frame (pos. 1) is placed, with the fluid on top, on a flat base. The particle filter (pos. 2) is centred and pressed into the fluid compound (observe the air flow direction of the particle filter). Take care that the filter material is not irreparably damaged when inserting the filter. Now the fluid frame along with the particle filter is inserted into the filter housing (pos. 3). The fluid frame is screwed down with knurled screws. Care must be taken that the filter clamps are at first tightened only slightly cross-wise (e.g. in the sequence filter clamps 4, 6, 5, 7). After tightening the filter clamps slightly, they can be tightened properly, again cross-wise and evenly until the filter unit has a tight fit. Care must be taken that the filter clamps are tightened to 2 Nm maximum.

FKU-W



Press the particle filter unit (pos. 2) with the sealing rubber pointing in the direction of the rear wall into the filter housing (pos. 1). Take care that the filter material is not destroyed. Place the VM pole braces (3) on the filter housing and fasten them with the filter corner clamps (4).

The filter corner clamps are tightened firmly until the filter cell has a tight fit. Care must be taken that the filter corner clamps are tightened cross-wise to 4 Nm maximum. If required, a seal leakage test can be carried out before mounting the air diffusers.