

# Ceiling Slot Diffuser DSX



Ferdinand Schad KG  
Steigstraße 25-27  
D-78600 Kolbingen  
Telephone +49 (0) 74 63 - 980 - 0  
Fax +49 (0) 74 63 - 980 - 200  
[info@schako.de](mailto:info@schako.de)  
[www.schako.de](http://www.schako.de)

## Ceiling Slot Diffuser Model DSX

### Contents

<b>Description</b> .....	<b>3</b>
Construction .....	3
Model .....	3
Accessories .....	4
Fastening .....	4
<b>Models and dimensions</b> .....	<b>4</b>
Throw pattern .....	4
Dimensions .....	5
Dimensions of accessories .....	6
Fastening methods .....	12
Installation .....	12
<b>Technical Data</b> .....	<b>13</b>
Pressure loss and noise level .....	13
Maximum end velocity of jet .....	15
Critical throw .....	16
Maximum penetration .....	16
Induction ratios .....	16
<b>Legend</b> .....	<b>17</b>
<b>Order details</b> .....	<b>18</b>
<b>Specification texts</b> .....	<b>20</b>

## Ceiling Slot Diffuser Model DSX

### Description

The narrow ceiling slot diffuser type DSX-S is suitable for installation in open or closed ceiling systems, in rooms 2.6 - 4 m high. If the black (RAL 9005) blades are fitted in panelled ceilings, the slot diffuser is virtually invisible. The versions DSX-P, DSX-PA and DSX-PB with support profile are suitable for the installation in ceiling panels.

Adjustments of the blades enable the diffuser to be used for cooling and heating applications. The high induction ensures fast reduction of the air outflow velocity and of the temperature difference in cooling mode. In heating mode, the vertical air throw guarantees a high penetration depth. The room can be heated quickly and effectively.

The air jet direction can also be adjusted from below, even when the diffuser has been installed. The free cross-section always remains constant. Likewise, the pressure loss and noise level do not change. A subsequent adjustment of the air jet pattern to changed room conditions is possible. To adjust the position of the blades, each blade must be pulled out and inserted again in accordance with the desired air flow direction. One- or two-way horizontal air throw and vertical air throw are possible. If the desired air throw is specified in the order, it will be set at the factory. If no clear specifications are given, blade position III (horizontal throw in alternating directions) will be set.

The stable air jet allows the diffuser to be used in VAV systems. Even at a volumetric flow reduced to 40%, the jet remains stable. The attached plenum box ensures a uniform distribution of the supply air over the whole area of the diffuser. At an extra charge, a throttle damper adjustable from below can be installed in the connection pipe for air volume regulation. The connection pipe of the plenum box can also be insulated either internally or externally. Connection to air-handling lights is possible (price on request).

A band design with plenum box is delivered with concealed mounting as standard. If the order does not specify the band design or if it is not obvious from the order documentation that the band design has been ordered, the individual grilles will be delivered with fixed connection to the plenum box.

For slot diffusers in band design with concealed mounting, the fastening effort is reduced by half, compared with the model without concealed mounting.

The ceiling slot diffuser DSX has been tested successfully by TÜV SÜD in accordance with the following regulations:

- **VDI 6022, Sheet 1: Hygienic requirements of ventilation and air-conditioning systems**
- **VDI 6022, Sheet 2: Hygienic requirements of ventilation and air-conditioning systems - Measurement methods and investigations during hygienic controls and hygienic inspections**
- **VDI 6022, Sheet 2: Air-conditioning technology - Health requirements**

### Diffuser mounting

Fixing lugs are provided in the plenum box to allow the diffuser to be suspended (see page 6). These fixing lugs can be provided with M4 riveting nuts at an extra charge.

### Construction

Air guide elements

- Plastic, RAL colour 9010 (white) or RAL 9005 (black)

Frame

- Extruded aluminium profile
- DSX-S: painted to the colour of the air guide blades RAL 9010 (white) or RAL 9005 (black)
- DSX-P, DSX-PA, DSX-PB: painted to RAL 9010 (white) or anodised in natural colour (E6/EV1)

### Model

DSX-S

- for invisible installation, without support profile

DSX-P

- for visible installation, with support profile.

DSX-PA

- for visible installation, with support profile

DSX-PB

- for visible installation, with support profile.

DSX-...-1/2/3/4

- 1-, 2-, 3-, or 4-slot

DSX-...-Z

- Supply air

DSX-...-A

- Return air with air guide elements

DSX-...-L I

- Air guide elements vertical throw

DSX-...-L II L

- Air guide elements one-way horizontal throw on the left

DSX-...-L II R

- Air guide elements one-way horizontal throw on the right

DSX-...-L III

- Air guide elements alternating horizontal throw (standard)

## Ceiling Slot Diffuser Model DSX

### Accessories

#### Plenum box (-ASK)

- Galvanised sheet steel, with lateral connection piece and fixing lugs.

#### Throttle damper (-DK)

- Damper fastening made of plastic
- Perforated damper, galvanised

#### Corner angle 90° (-EW)

- Extruded aluminium profile (in the same colour as DSX)

#### M4 riveting nut

- at an extra charge

#### End piece (pair) (-ES)

- supplied loose as standard. If there are order details regarding fitting, mounting will take place at the manufacturer's.
- ES1 for DSX-S, painted aluminium RAL 9005 (black) or RAL 9010 (white)
- ES2 for DSX-P, natural anodised aluminium E6/EV1, or painted aluminium RAL 9010 (white)
- ES3 for DSX-PB, anodised aluminium in natural colour E6/EV1, or painted aluminium RAL 9010 (white).

#### Rubber lip seal (-GD)

- Special rubber

#### Internal insulation (-li)

- thermal insulation at the inside of the plenum box

#### External insulation (-la)

- thermal insulation at the outside of the plenum box

#### Dummy plate (-BS)

- with dummy plate made of galvanised sheet steel
- with M4 riveting nut

#### Mounting bracket (pair) (-BW) for operation with overflow air

- Galvanised sheet steel
- with M4 riveting nut

#### Connection element 1

- Galvanised sheet steel
- for connectin of plenum box with band design
- supplied loose as standard

#### Connection element 2

- Spring band steel
- for connection of DSX-... with band design
- supplied loose as standard

#### Mounting handle for connection element 2 (-FMG)

### Fastening

#### Permanent connection

- Standard for the versions DSX-S, DSX-P, DSX-PA and DSX-PB

#### Clamp fastening

- Installation of the DSX-P and DSX-PB without plenum box in pressure ceilings.

#### Concealed mounting (-VM)

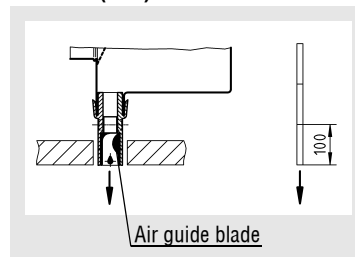
- Standard for band design with plenum box (-ASK)
- available for single diffusers with plenum box (-ASK)

### Models and dimensions

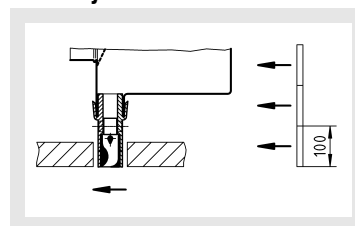
#### Throw pattern

#### Air guide blade position (air throw direction):

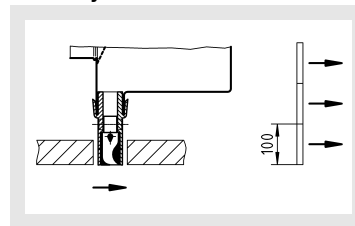
##### vertical (-L I)



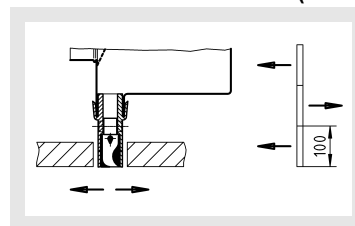
##### one-way horizontal throw to the left (-L II L)



##### one-way horizontal throw to the right (-L II R)

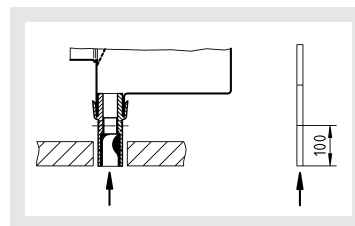


##### alternate horizontal throw (-L III, standard)



All adjacent air guide blades will be set in one direction when ordering multi-slot models

#### Return air

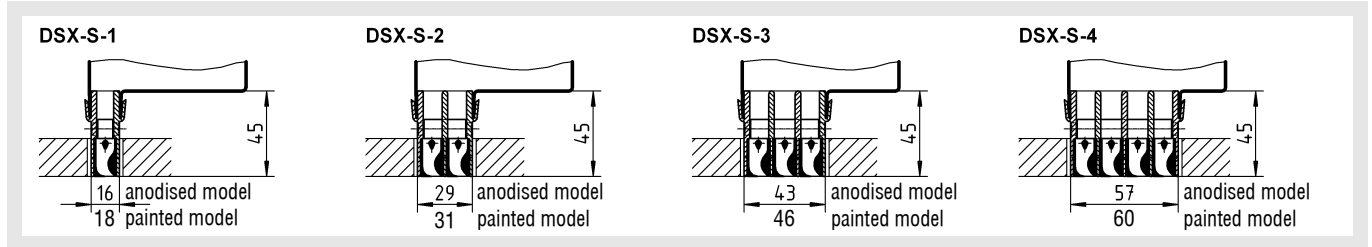


# Ceiling Slot Diffuser Model DSX

## Dimensions

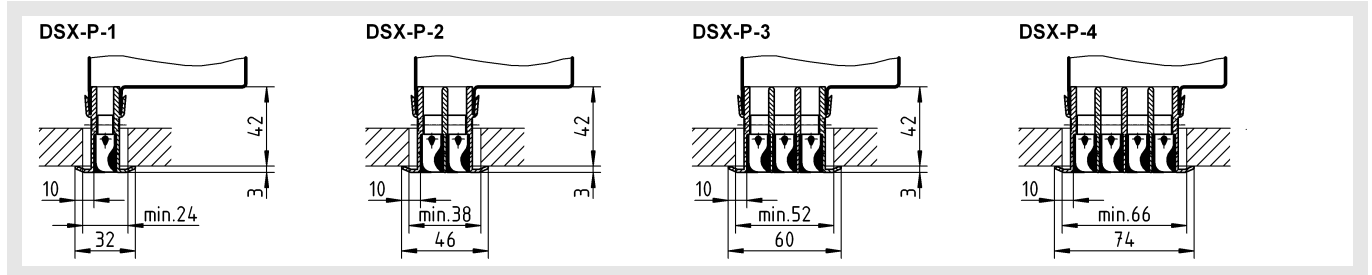
### DSX-S, without support profile

For installation in open and closed ceiling systems or for invisible installation in gap of panelled ceilings.



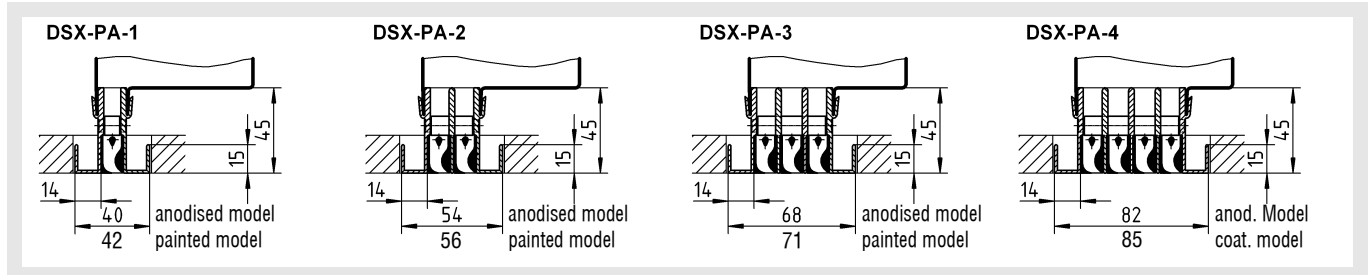
### DSX-P: with support profile

For ceiling tiles, suitable for installation in open and closed ceiling systems.



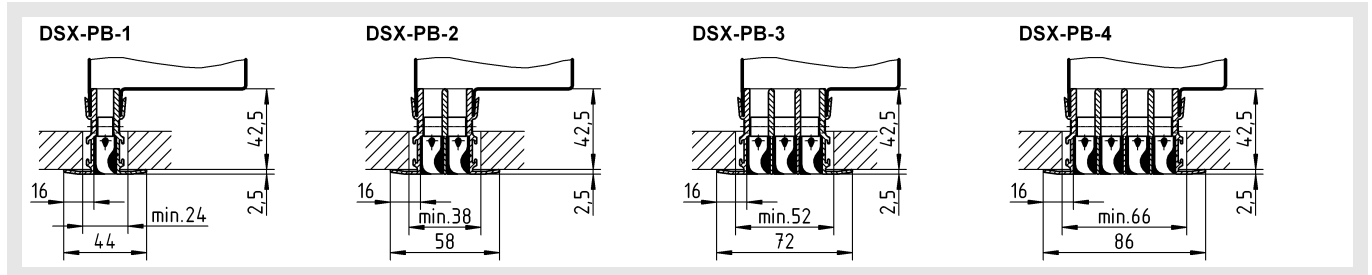
### DSX-PA, with support profile

For installation in open and closed ceiling systems.



### DSX-PB, with support profile

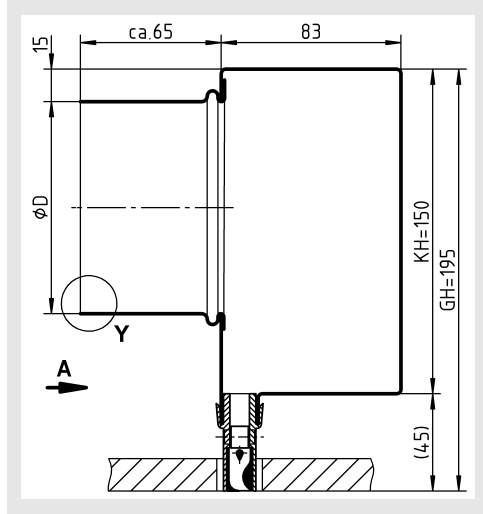
For ceiling tiles, suitable for installation in open and closed ceiling systems.



# Ceiling Slot Diffuser Model DSX

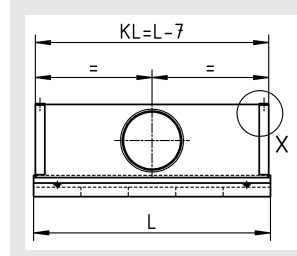
## Dimensions of accessories

Plenum box (-ASK)  
for DSX-S / DSX-P / DSX-PA / DSX-PB

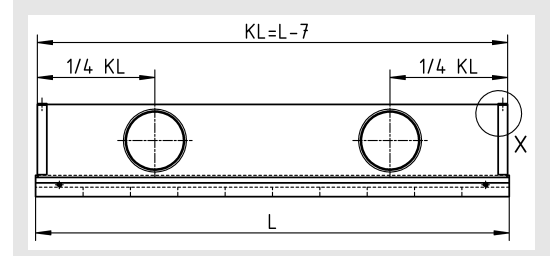


KH = Height of plenum box  
GH = Total height

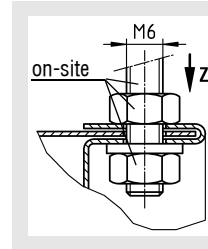
View A  
with 1 connection piece



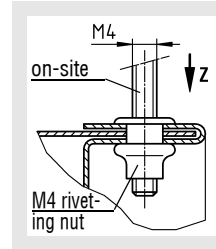
with 2 connection pieces



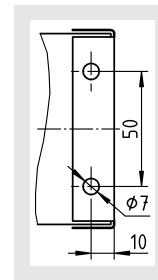
Detail X / diffuser mounting  
Standard:



at an extra charge:



View Z

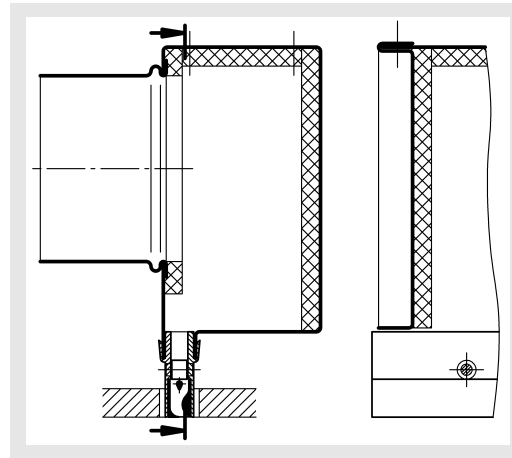


To facilitate ceiling mounting, the plenum boxes can be provided with an M4 riveting nut. Fastening is to be carried out on-site if diffusers are ordered without plenum boxes.

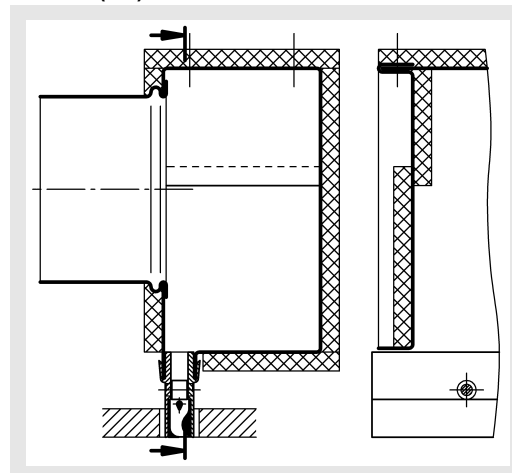
## Available sizes

	øD		
	L ≤ 500	500 < L ≤ 1000	1000 < L ≤ 1500
DSX-...-1	ø 98	ø 98	ø123
DSX-...-2	ø 98	ø123	2 x ø123
DSX-...-3	ø123	ø123	2 x ø123
DSX-...-4	ø123	2 x ø123	2 x ø123

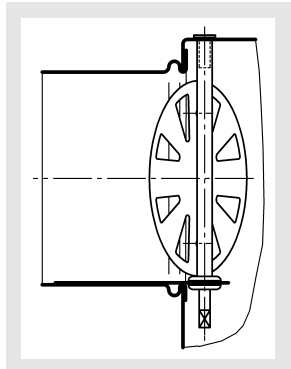
## Insulation for plenum box inside (-li)



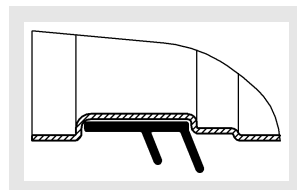
## outside (-la)



## Damper (-DK)

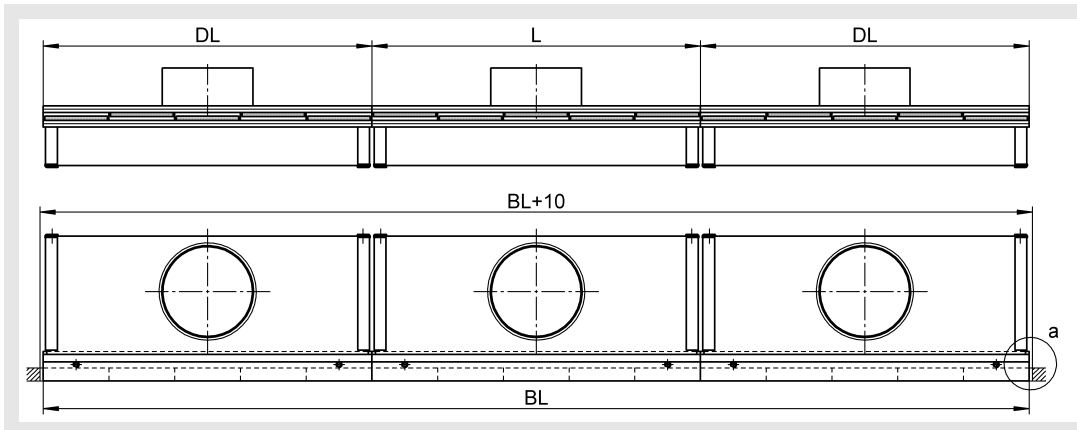


## Rubber lip seal (-GD) Detail Y

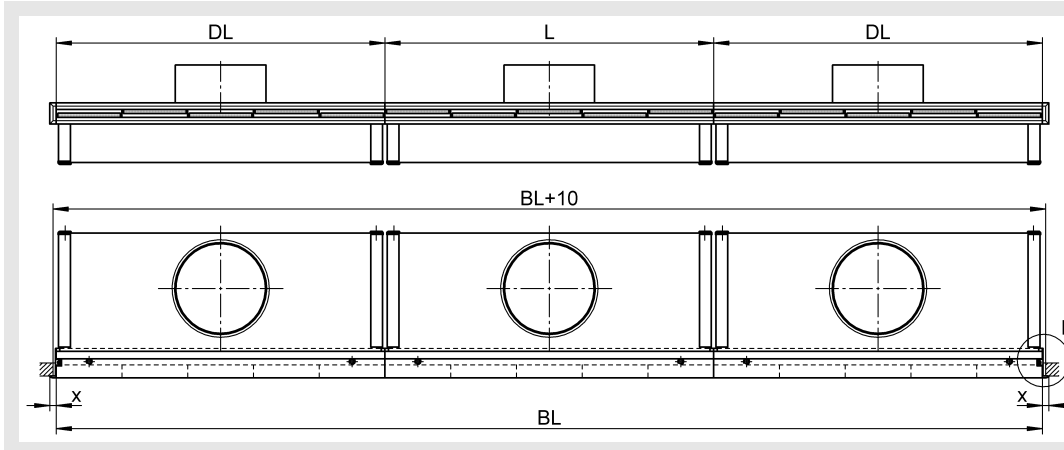


# Ceiling Slot Diffuser Model DSX

## Band design DSX-... without end piece



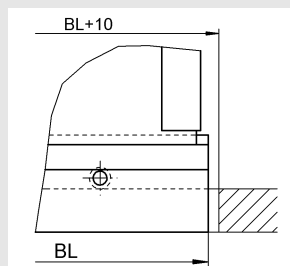
## Band design DSX-... with end piece



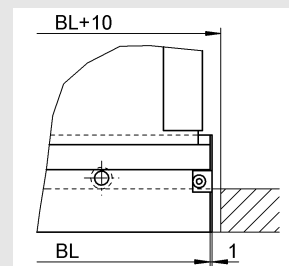
	X	t
<b>DSX-S</b>	1	-
<b>DSX-P</b>	10	3
<b>DSX-PB</b>	16	2,5

DL = Difference distance  
 BL = Length of band  
 L = 500/1000/1500mm

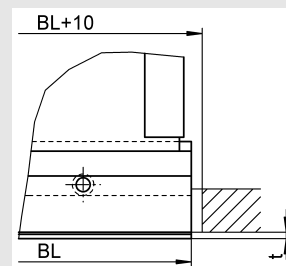
**DSX-S**  
Detail a, without end piece



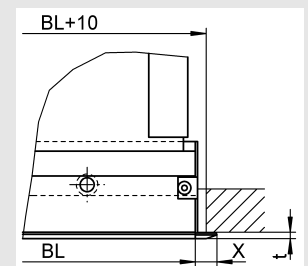
**DSX-S**  
Detail b, with end piece



**DSX-P / DSX-PB**  
Detail a, without end piece



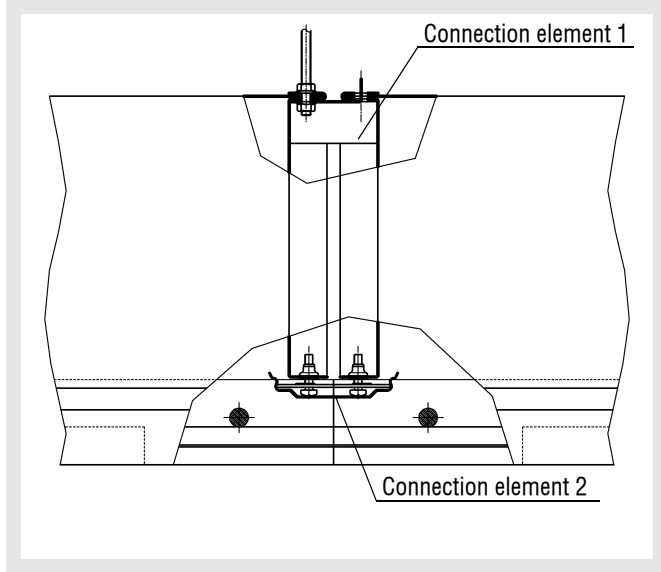
**DSX-P / DSX-PB**  
Detail b, with end piece



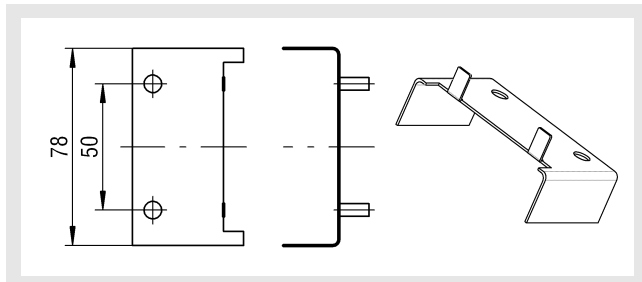
When the ceiling slot diffuser type DSX is designed as a band > 2000 mm, the total length BL is assembled from standard lengths L = 1500 mm. The difference pieces <1500 mm to ≥400 mm are fitted with a plenum box. The difference pieces <400 mm are supplied as dummy plates without plenum box. A different band division is possible after consultation and when required by the customer. Individual sections are attached (for on-site assembly) using connecting elements.

# Ceiling Slot Diffuser Model DSX

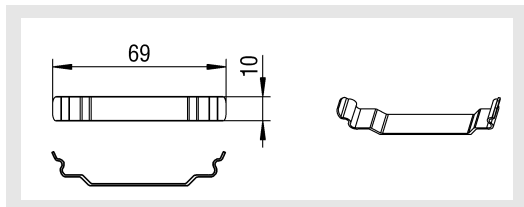
**Connection element for band design**  
(supplied loose as standard)



## Detail of connection element 1

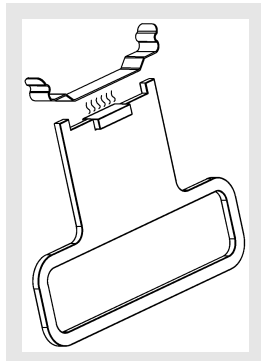


## Detail of connection element 2

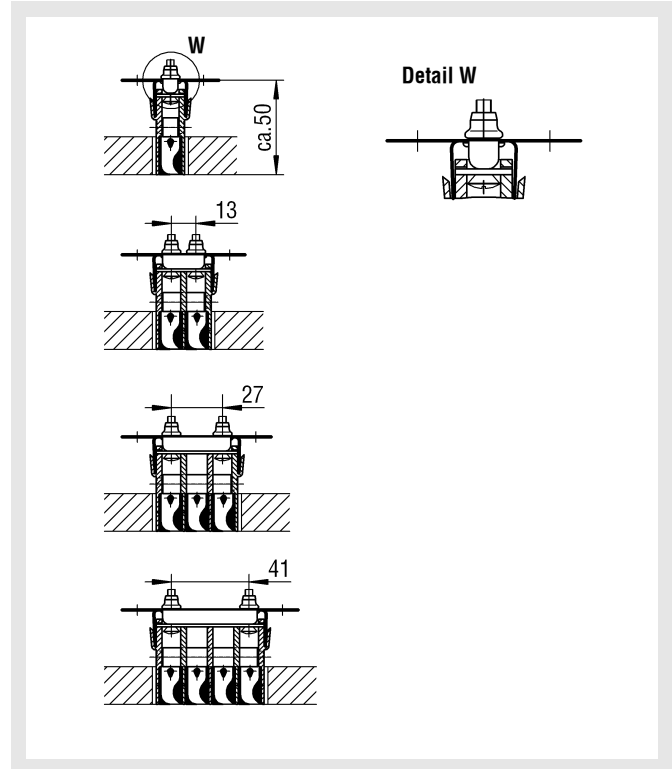


For the ceiling slot diffuser DSX-...-1 a connection element 2 is used. For each of the DSX-...-2 to DSX-...-4, 2 connection elements are used in the outer slots.

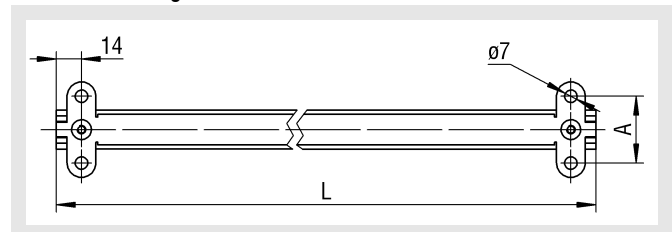
## Mounting handle for connection element 2 (-FMG)



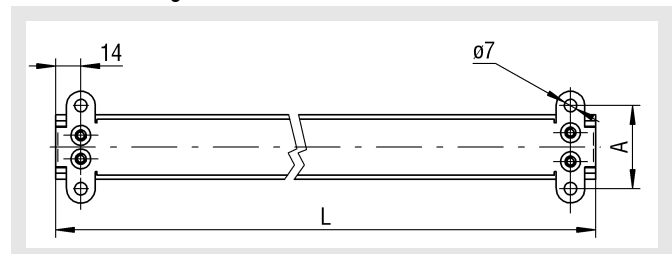
## Dummy piece (-BS)



## Arrangement of the mounting holes in the dummy plate DSX-...-1 (1-slot) with 2 mounting holes



## DSX-...-2 to DSX-...-4 (2- to 4-slot) with 4 mounting holes

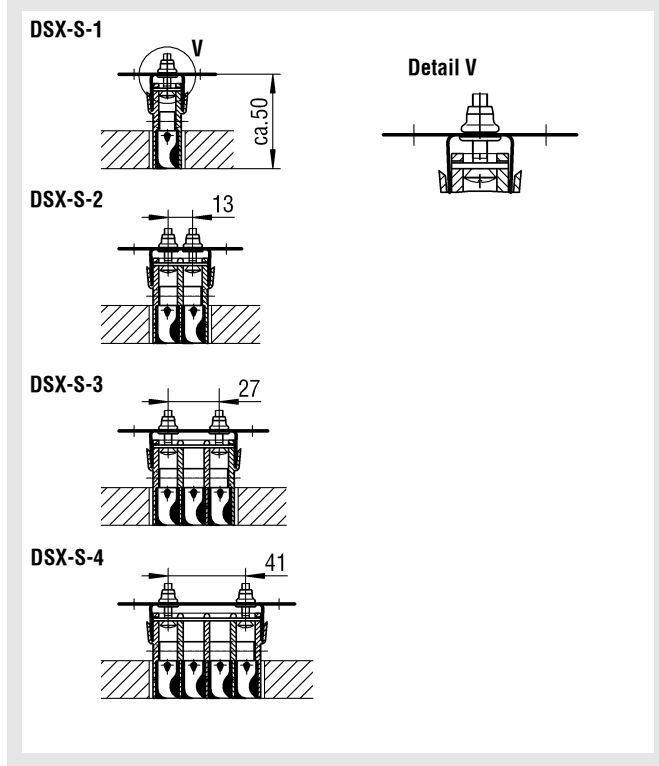


In the dummy design, no operation with overflow air is possible since the slot diffuser is completely closed at the back.

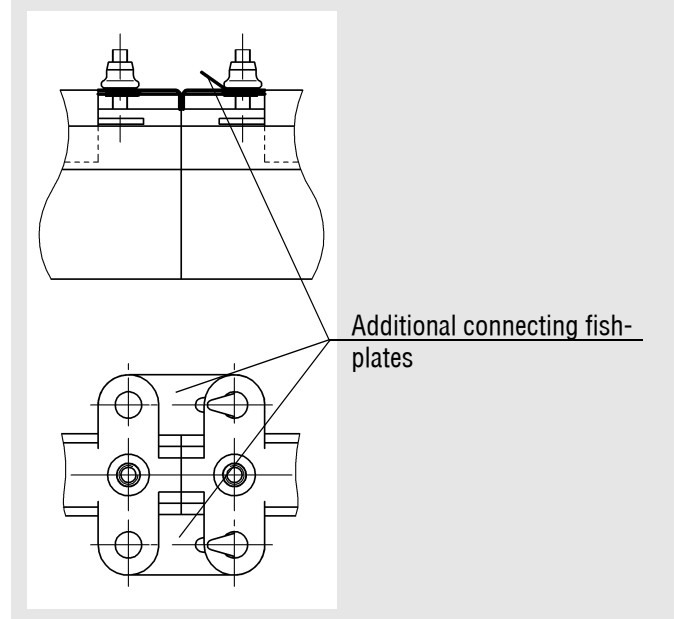
DSX-...-				
	1	2	3	4
A	35	49	63	77

# Ceiling Slot Diffuser Model DSX

## Mounting bracket (pair) (-BW) for operation with overflow air



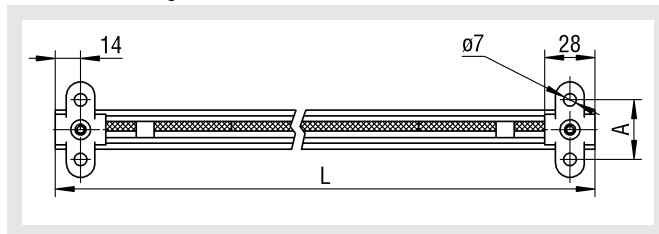
## Band design for operation with overflow air or dummy plates



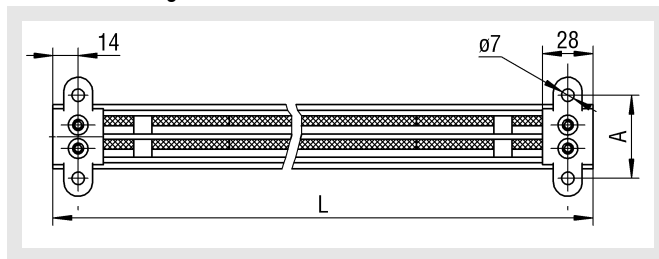
In the band design for operation with overflow air or dummy plates, two additional fishplates are supplied loose, thus only requiring two threaded bars on-site for suspension.

## Arrangement of the mounting holes

DSX-...-1 (1-slot)  
with 2 mounting holes



DSX-...-2 to DSX-...-4 (2- to 4-slot)  
with 4 mounting holes



DSX-...-				
	1	2	3	4
A	35	49	63	77

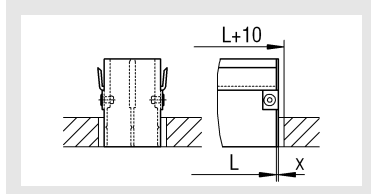
## Ceiling Slot Diffuser Model DSX

### End piece (-ES)

To give the impression of a continuous frame, lateral end pieces can be fitted (at an extra charge).

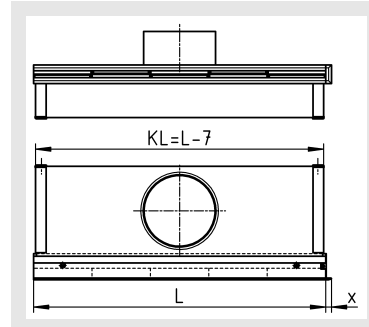
These end pieces are supplied loosely as standard. If there are order details regarding fitting, mounting will take place at the manufacturer's.

### for DSX-S (-ES1)



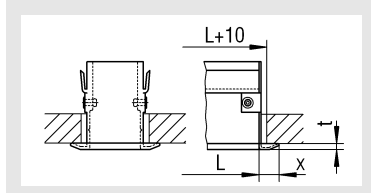
	x	t
ES1	1	-
ES2	10	3
ES4	16	2,5

### End piece on the right (-ES2 / -ES3)

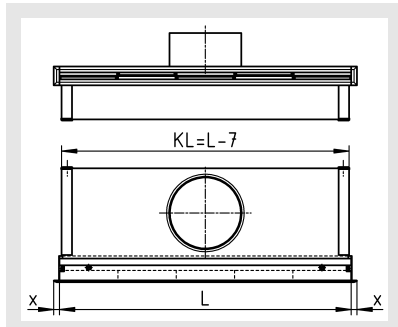


When placing orders, it is essential to specify whether the end piece is to be attached to both sides, or the left- or right-hand side.

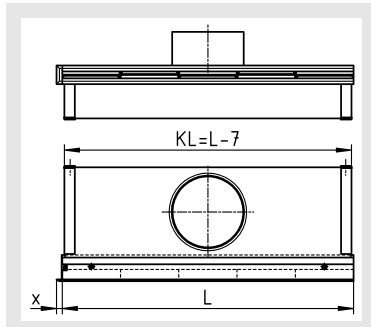
### for DSX-P (-ES2) / for DSX-PB (-ES3)



### End piece on both sides (-ES2 / -ES3)

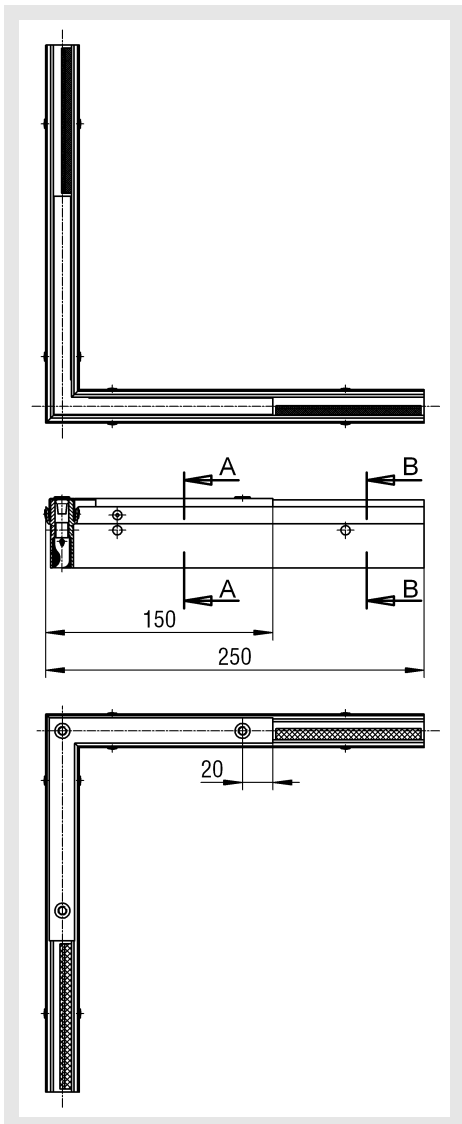


### End piece on the left (-ES2 / -ES3)

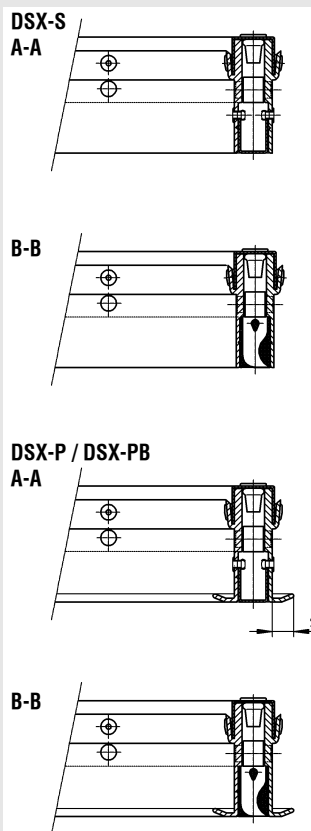


# Ceiling Slot Diffuser Model DSX

## Corner angle (-EW) (1-slot)



### Sections



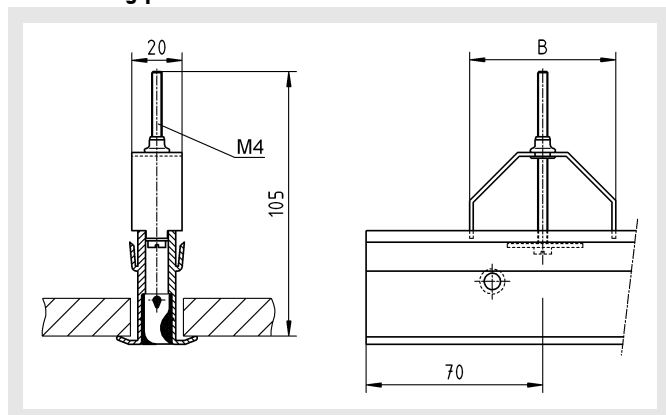
Corner angles can only be supplied as dummy sections, i.e., without a plenum box. The corner angle has a 90° angle and is 250 mm long. Other angles are available on request. The dummy plate used is painted to the colour RAL 9005 (black) or RAL 9010 (white). The corner brackets are supplied loose as standard.

	s (mm)
DSX-P	8,5
DSX-PB	14,5

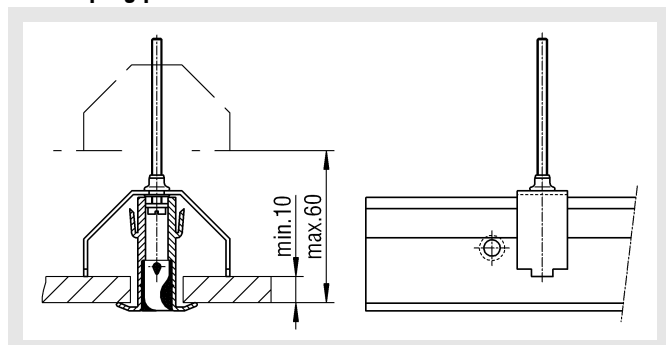
## Ceiling Slot Diffuser Model DSX

### Fastening methods

Clamp fastening for DSX-XXL-P and DSX-XXL-PB in mounting position



in clamping position



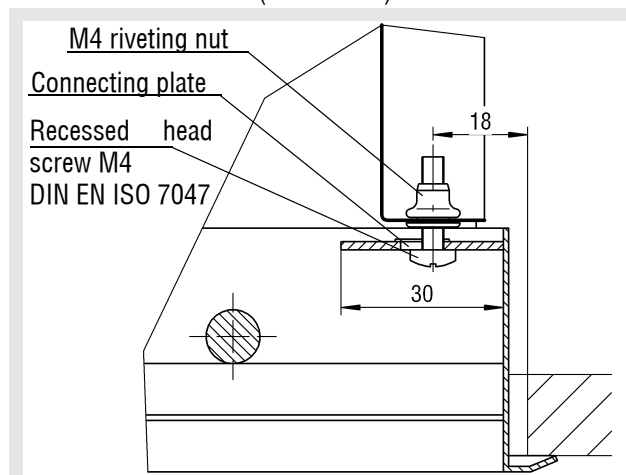
	DSX-P 1 DSX-PB1	DSX-P 2 DSX-PB2	DSX-P 3 DSX-PB3	DSX-P 4 DSX-PB4
B	58	72	86	100

The clamp connection for the slot diffuser type DSX is required in order to assemble the slot diffuser from the room side into pressure ceilings.

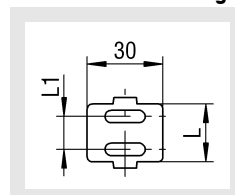
### Assembly instruction

The clamp straps are delivered mounted lengthwise. Pull out the air guide elements, behind which screw fittings are positioned. Before assembly of the slot diffuser, the clamp straps are rotated anti-clockwise out of the slot diffuser profile. Insert slot diffuser profile into the ceiling. Rotate the screw on the clamp strap by approx. 90° and lower the strap over the slot diffuser profile. Now tighten screw again clockwise until the slot diffuser profile is assembled firmly with the clamp strap to the ceiling.

Concealed mounting (-VM) with plenum box  
DSX-...-1 to DSX-...-4 (1- to 4-slot)



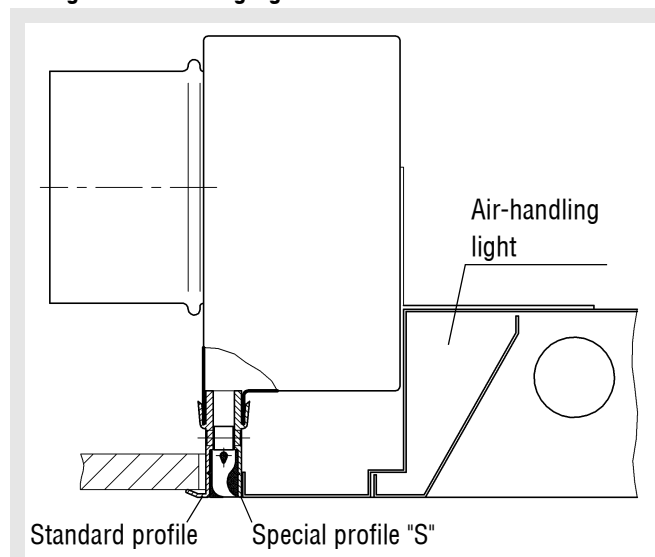
Detail of connecting plate



	L	L1
DSX-1	9	-
DSX-2	23	13
DSX-3	37	27
DSX-4	51	41

### Installation

Fitting to air-handling lights



When attaching slot diffusers to air-handling lights, the external profile of the DSX-S is attached to the mounting side to ensure a perfectly flush fit. The other dimensions are those of the standard plenum box.

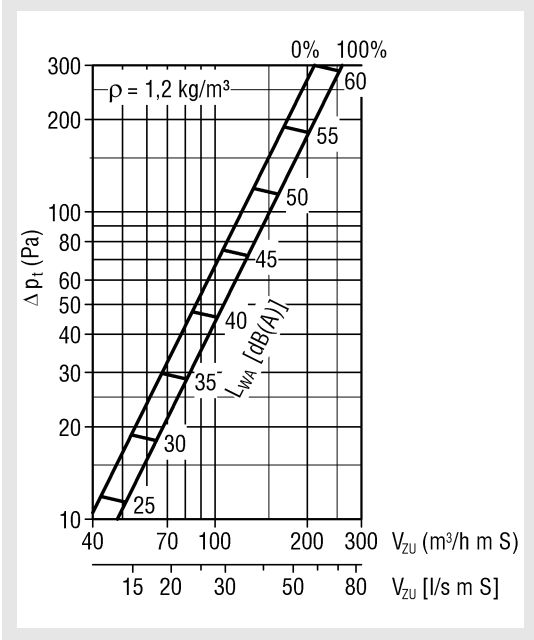
# Ceiling Slot Diffuser Model DSX

## Technical Data

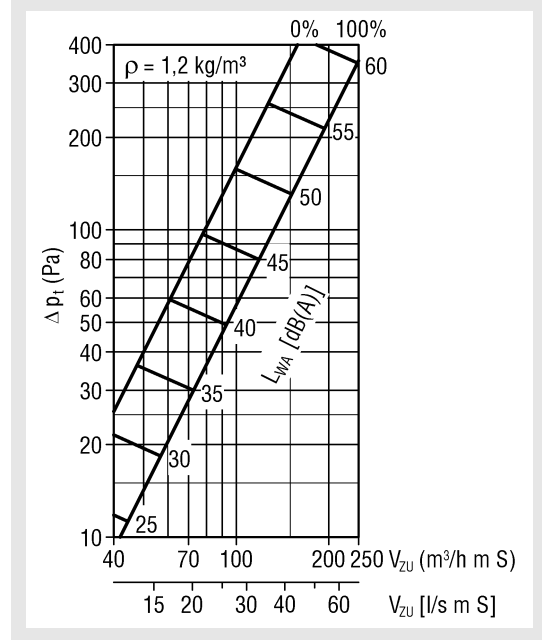
### Pressure loss and noise level

L=1000 (supply air)

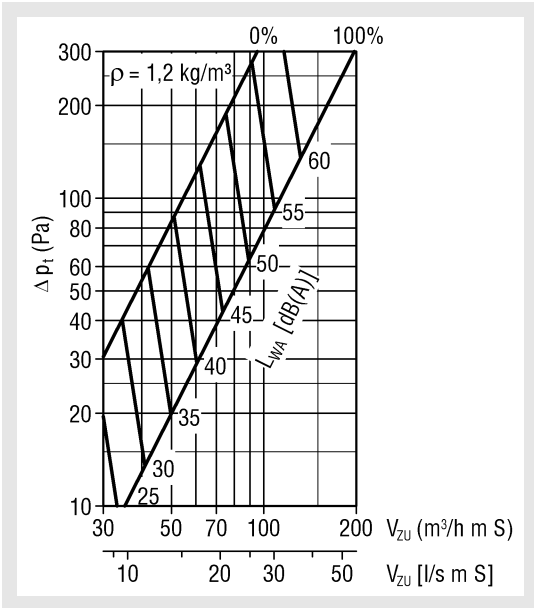
DSX...-1 with ASK



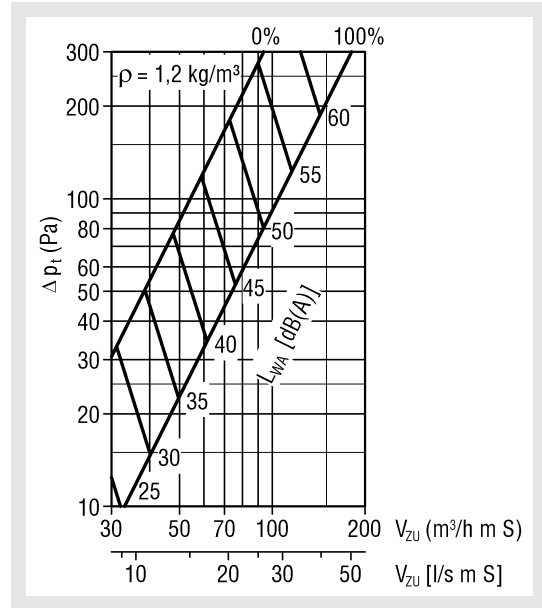
DSX...-2 with ASK



DSX...-3 with ASK



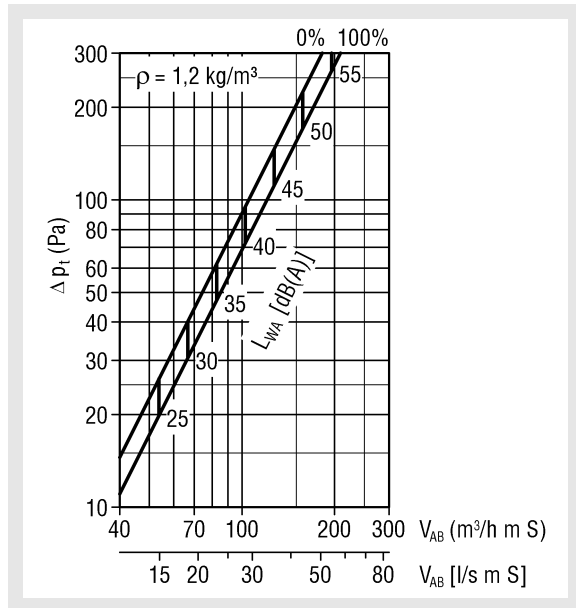
DSX...-4 with ASK



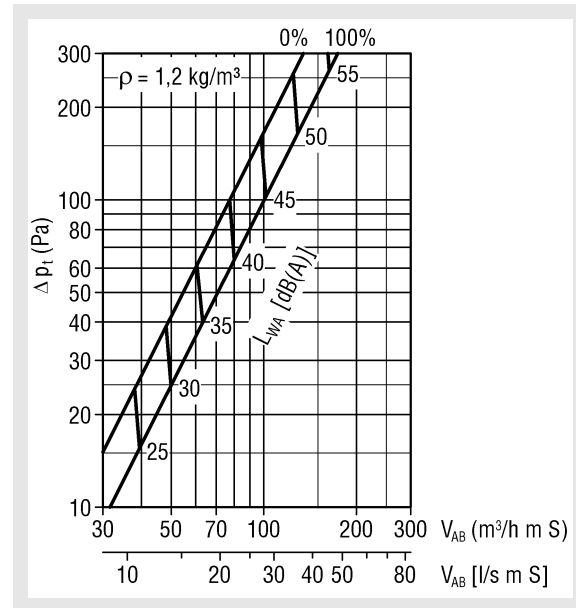
Damper position (0% = CLOSED / 100% = OPEN)

## Ceiling Slot Diffuser Model DSX

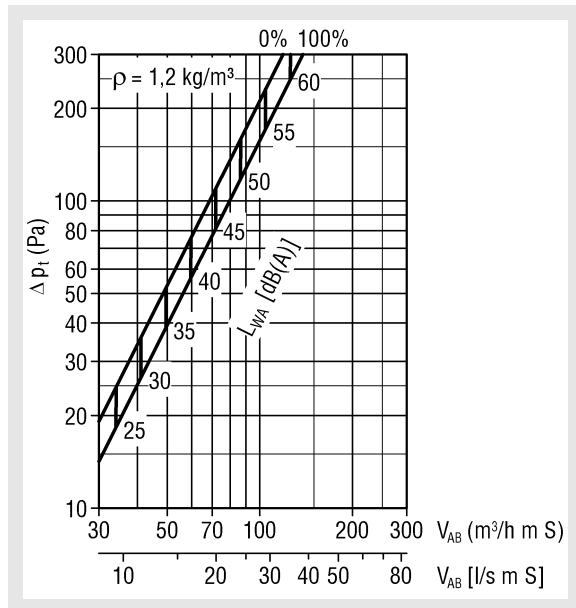
L = 1000 (return air), with air guide elements  
**DSX-...-1 with ASK**



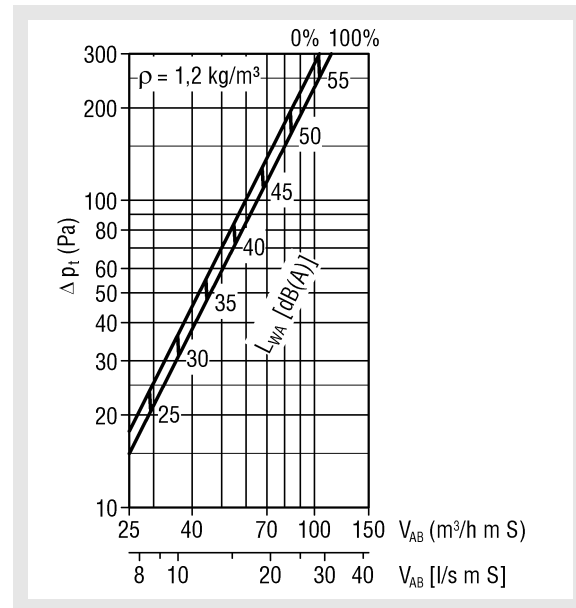
**DSX-...-2 with ASK**



**DSX-...-3 with ASK**



**DSX-...-4 with ASK**



**Length correction factor  
for noise level (supply air and return air)  
with air guide elements**

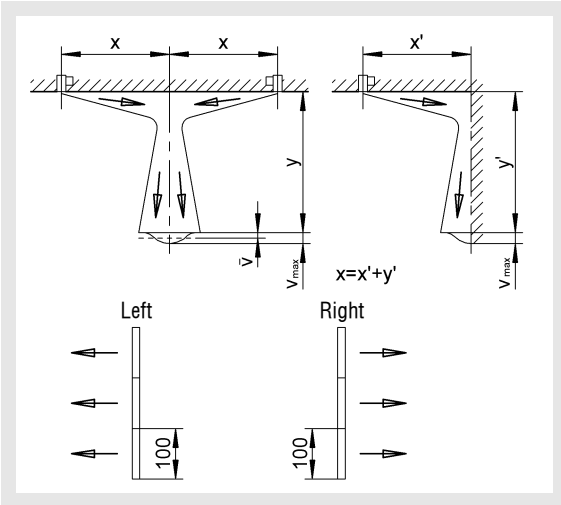
L (m)	1	1,5	2	2,5	3	4	5
KF (-)	0,0	1,8	3,0	4,0	4,7	6,0	7,0

Damper position (0% = CLOSED / 100% = OPEN)

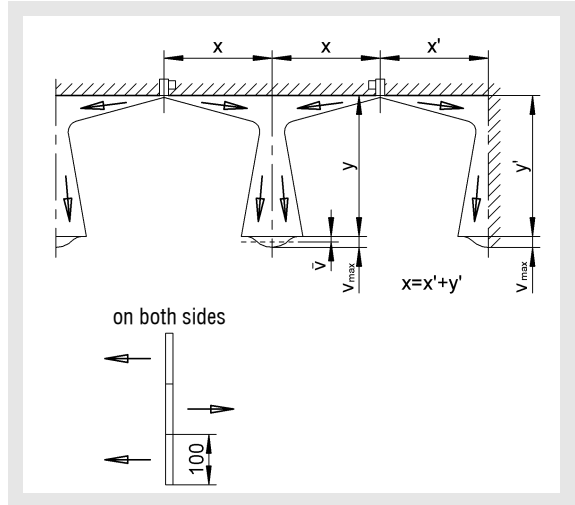
# Ceiling Slot Diffuser Model DSX

## Maximum end velocity of jet

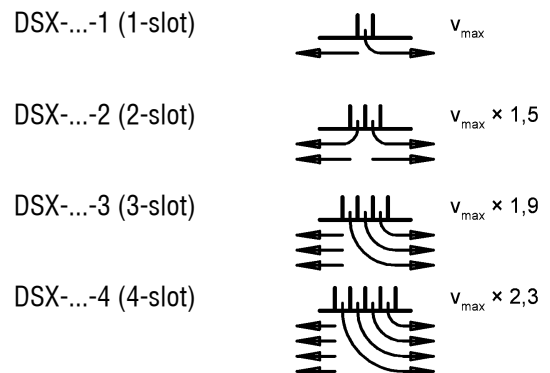
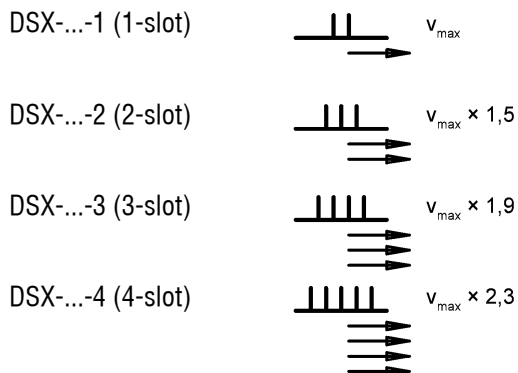
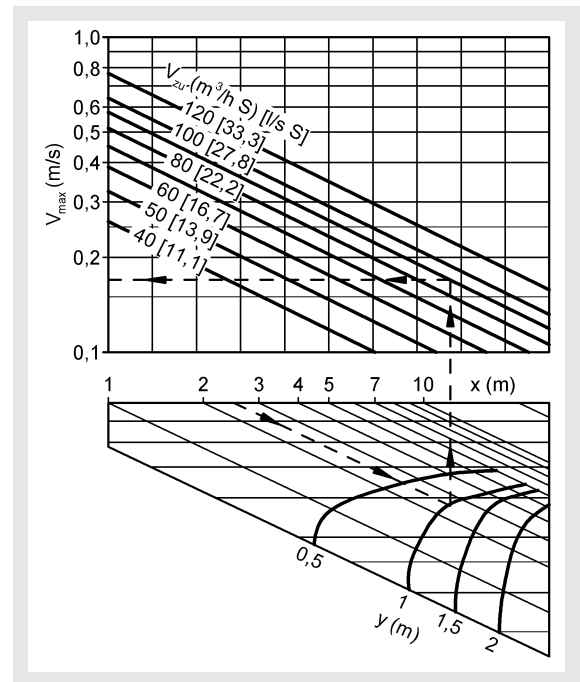
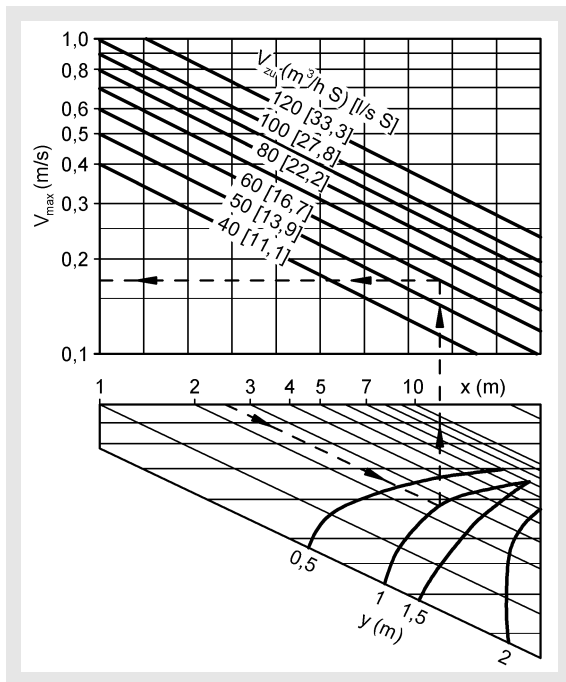
Blade position II (supply air)  
(one-way horizontal throw, left / right)



Blade position III (supply air)  
(two-way horizontal throw)



With several slot models, all air guiding elements are aligned and inserted to a one-way throw direction.

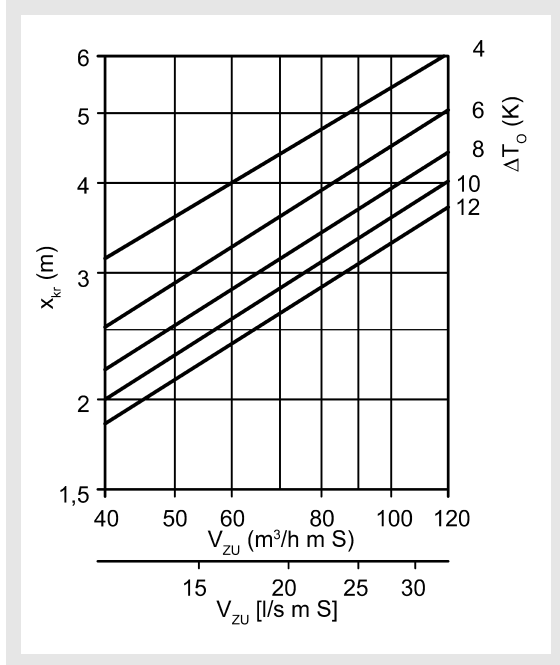


# Ceiling Slot Diffuser Model DSX

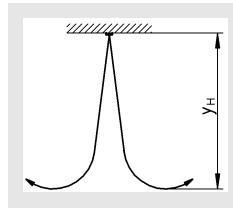
## Critical throw

### Air guide blade positions II + III

(one-way horizontal throw on the left side or on the right side + on both sides)



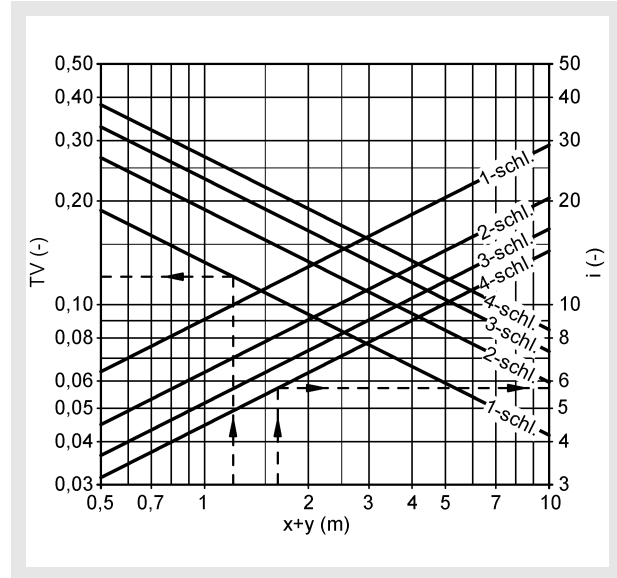
- 2-slot  $x_{kr} \times 1.5$
- 3-slot  $x_{kr} \times 1.8$
- 4-slot  $x_{kr} \times 2.2$



## Induction ratios

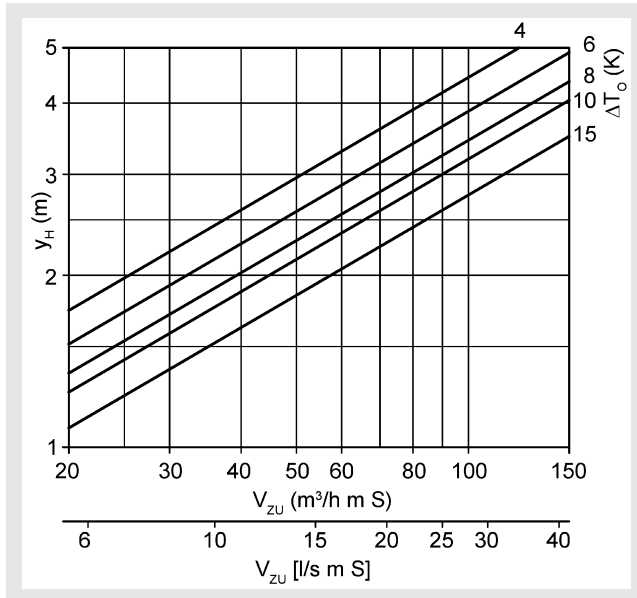
### Air guide blade position II

(one way horizontal throw blowing left or right)



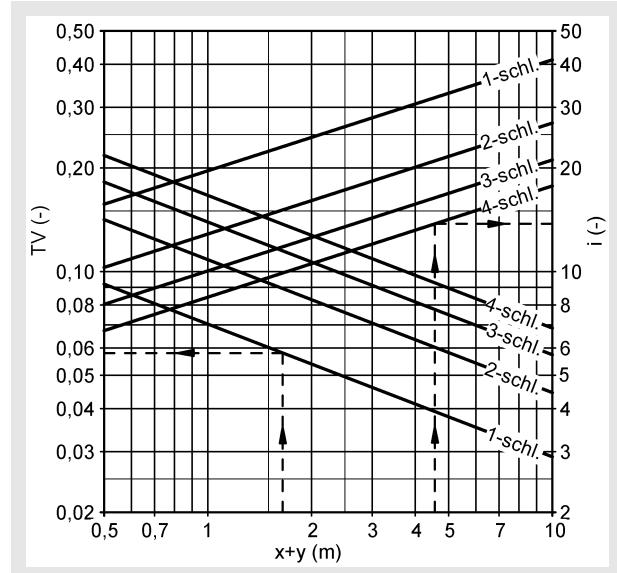
## Maximum penetration in heating mode

### Air guide blade position I



## Air guide elements position III

(two way horizontal throw)



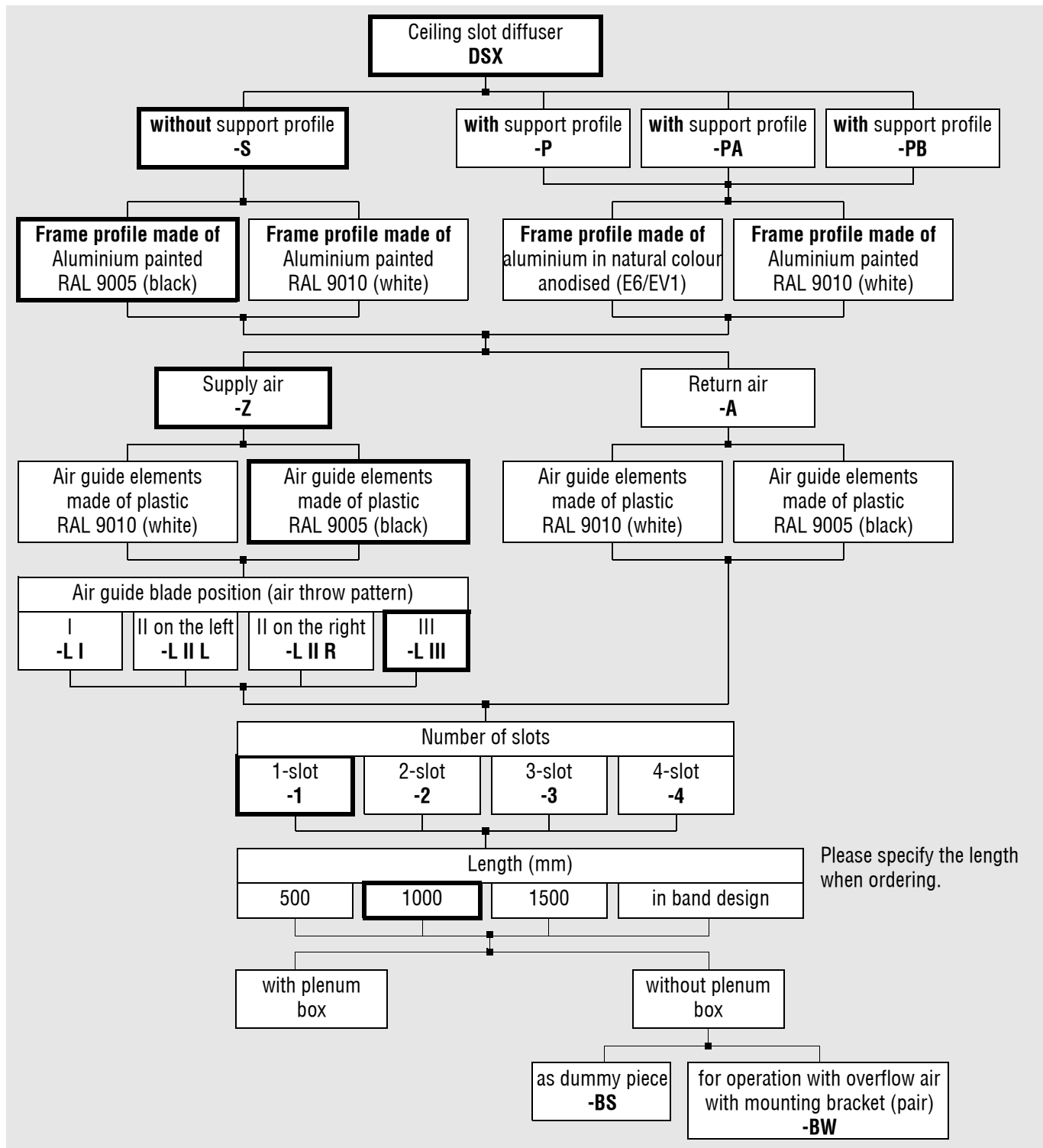
## Ceiling Slot Diffuser Model DSX

### Legend

$V_{ZU}$	( $m^3/h$ m S)	= air volume per meter per slot
$V_{ZU}$	[l/s m S]	= air volume per meter per slot
$\Delta p_t$	(Pa)	= Pressure loss
$\rho$	( $kg/m^3$ )	= Density
$L_{WA}$	[dB(A)]	= A-weighted sound power level ( $L_{WA} - L_{WA1} + KF$ )
$L_{WA1}$	[dB(A)]	= A-weighted sound power level, relative to L = 1000 $m^2$
$x_{kr}$	(m)	= Critical throw
$\Delta T_0$	(K)	= Temperature difference between supply air temperature and room temperature ( $\Delta T_0 =$ $t_{ZU} - t_R$ )
$\Delta T_x$	(K)	= Temperature difference at point x
$v_{max}$	(m/s)	= Maximum end velocity of jet
$v$	(m/s)	= Average end velocity of jet ( $v = v_{max} \times 0,5$ )
TV	(-)	= Temperature ratio ( $TV = \Delta T_x / \Delta T_0$ )
i	(-)	= Induction ratio ( $i = V_x / V_{ZU}$ )
x	(m)	= Horizontal throw
y	(m)	= Vertical throw
x+y	(m)	= horizontal + vertical throw
$y_H$	(m)	= Maximum penetration in heating mode
$t_{ZU}$	( $^{\circ}C$ )	= Supply air temperature
$t_R$	( $^{\circ}C$ )	= Room temperature
KF	(-)	= Correction factor
L	(mm)	= Length
$V_x$	( $m^3/h$ )	= total air jet volume at point x
$V_x$	[l/s]	= total air jet volume at point x

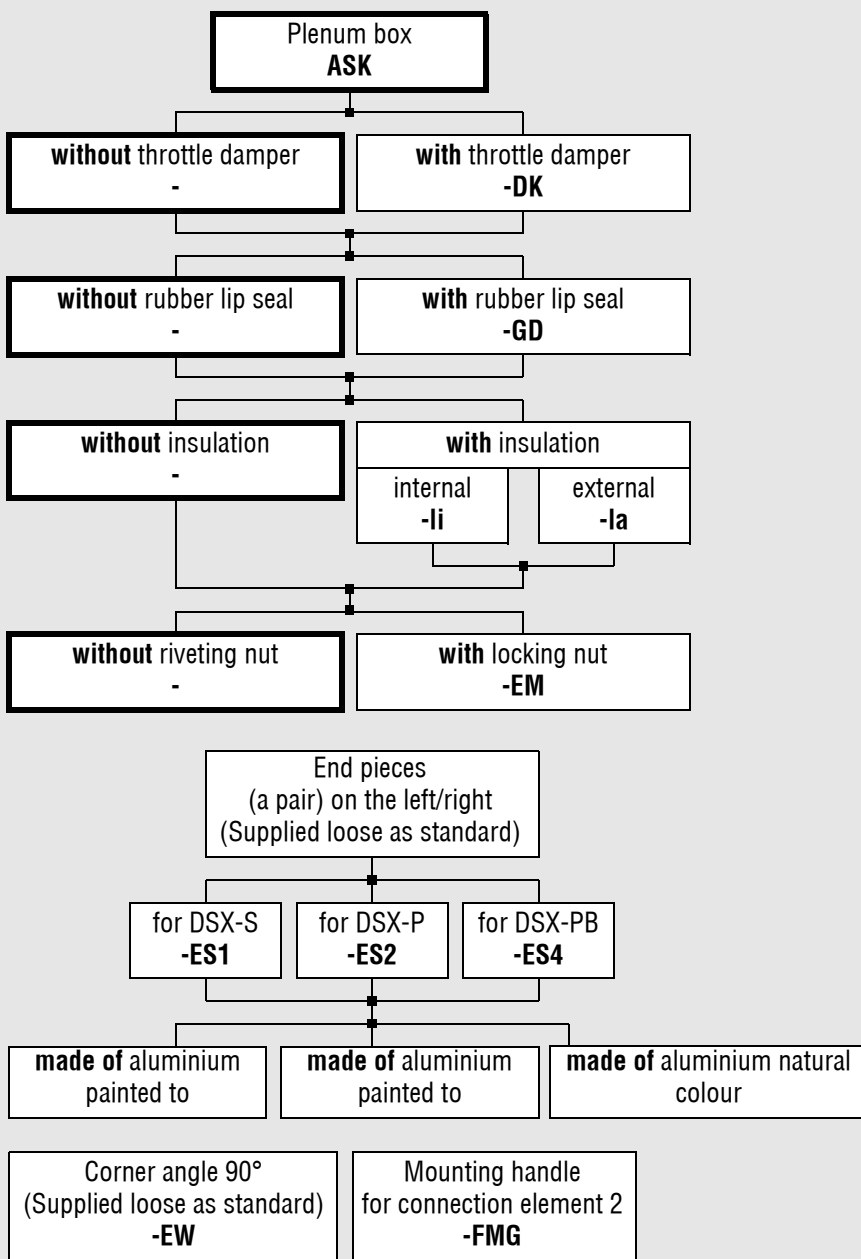
# Ceiling Slot Diffuser Model DSX

## Order details



## Ceiling Slot Diffuser Model DSX

### Accessories:



### Order example:

DSX-P1-Z, L III, length 1000 mm, with ASK

**Unless stated otherwise, the thick-frame model will be delivered!**

## Ceiling Slot Diffuser Model DSX

### Specification texts

Ceiling slot diffuser **type DSX-S**, for supply air, suitable for installation in open or closed ceiling systems or for concealed installation in joints of panelled ceilings. Air outflow direction can be adjusted afterwards from below. Noise level and pressure loss remain constant in all air guide blade positions.

Slot diffuser consisting of extruded aluminium profile painted in black (RAL 9005) or white (RAL 9010), depending on the colour of the air guide blade. Air guide elements made of plastic, colour RAL 9005 (black) or RAL 9010 (white). TÜV tested according to **VDI 6022 Sheets 1+2** and **DIN 1946 Sheet 2**.

Product: SCHAKO **type DSX-S-Z**

- Version (number of slots)
  - **Type DSX-S1** (1-slot)
  - **Type DSX-S2** (2-slot)
  - **Type DSX-S3** (3-slot)
  - **Type DSX-S4** (4-slot)
- Air guide element position:
  - **L I**, vertical throw
  - **L II L**, one-way horizontal throw on the left
  - **L II R**, one-way horizontal throw on the right
  - **L III**, alternate horizontal throw (standard)
- Length:
  - 500 mm
  - 1000 mm
  - 1500 mm
- in band design with plenum box (-ASK) and concealed mounting (-VM)
- Model without plenum box
  - as dummy piece (-BS)
    - with M4 riveting nuts
  - for operation with overflow air with mounting bracket (pair) (-BW)
    - with M4 riveting nuts
- Return air version with air guide blades

Product : SCHAKO **type DSX-S-A**

### Accessories:

- with plenum box (-ASK) made of galvanised sheet steel and lateral connection piece and fixing lugs.
- with a throttle damper (-DK) adjustable from the front in the plenum box for air volume regulation
- with rubber lip seal (-Gd)
- with thermal insulation
  - internal (-li)
  - external (-la)
- with M4 riveting nuts
- with end piece (-ES1, pair) (supplied loose as standard), made of aluminium painted to
  - RAL 9005 (black) or
  - RAL 9010 (white)
- Corner bracket 90° (-EW) (supplied loose as standard)
- Mounting handle for connection element 2 (-FMG)

## Ceiling Slot Diffuser Model DSX

Ceiling slot diffuser **type DSX-P**, for supply air, with support profile, is suitable for installation in open or closed ceiling systems. Air outflow direction can be adjusted afterwards from below. Noise level and pressure loss remain constant in all air guide blade positions.

Slot diffuser consisting of extruded aluminium profile natural colour anodised E6/EV1 or painted to RAL 9010 (white).

Air guide elements made of plastic, colour RAL 9005 (black) or RAL 9010 (white).

TÜV tested according to **VDI 6022 Sheets 1+2** and **DIN 1946 Sheet 2**.

Product: SCHAKO **type DSX-P-Z**

- Version (number of slots)
  - **Type DSX-P1** (1-slot)
  - **Type DSX-P2** (2-slot)
  - **Type DSX-P3** (3-slot)
  - **Type DSX-P4** (4-slot)
- Air guide element position:
  - **L I**, vertical throw
  - **L II L**, one-way horizontal throw on the left
  - **L II R**, one-way horizontal throw on the right
  - **L III**, alternate horizontal throw (standard)
- Length:
  - 500 mm
  - 1000 mm
  - 1500 mm
  - in band design with plenum box (-ASK) and concealed mounting (-VM)
  - Model without plenum box
    - as dummy piece (-BS)
      - with M4 riveting nuts
    - for operation with overflow air with mounting bracket (pair) (-BW)
      - with M4 riveting nuts
- Return air version with air guide blades

Product : SCHAKO **type DSX-P-A**

### Accessories:

- with plenum box (-ASK) made of galvanised sheet steel and lateral connection piece and fixing lugs.
  - with a throttle damper (-DK) adjustable from the front in the plenum box for air volume regulation
  - with rubber lip seal (-Gd)
  - with thermal insulation
    - internal (-li)
    - external (-la)
  - with M4 riveting nuts
- with end piece (-ES2, pair) (supplied loose as standard), made of anodised aluminium in natural colour (E6/EV1) or painted aluminium in white (RAL 9010).
- Corner bracket 90° (-EW) (supplied loose as standard)
- Mounting handle for connection element 2 (-FMG)

## Ceiling Slot Diffuser Model DSX

Ceiling slot diffuser **type DSX-PA**, for supply air, with support profile, suitable for installation in open or closed ceiling systems. Air outflow direction can be adjusted afterwards from below. Noise level and pressure loss remain constant in all air guide blade positions.

Slot diffuser consisting of extruded aluminium profile natural colour anodised E6/EV1 or painted to RAL 9010 (white).

Air guide elements made of plastic, colour RAL 9005 (black) or RAL 9010 (white).

TÜV tested according to **VDI 6022 Sheets 1+2** and **DIN 1946 Sheet 2**.

Product: SCHAKO **type DSX-PA-Z**

- Version (number of slots)
  - **Type DSX-PA1** (1-slot)
  - **Type DSX-PA2** (2-slot)
  - **Type DSX-PA3** (3-slot)
  - **Type DSX-PA4** (4-slot)
- Air guide element position:
  - **L I**, vertical throw
  - **L II L**, one-way horizontal throw on the left
  - **L II R**, one-way horizontal throw on the right
  - **L III**, alternate horizontal throw (standard)
- Length:
  - 500 mm
  - 1000 mm
  - 1500 mm
  - in band design with plenum box (-ASK) and concealed mounting (-VM)
  - Model without plenum box
    - as dummy piece (-BS)
      - with M4 riveting nuts
    - for operation with overflow air with mounting bracket (pair) (-BW)
      - with M4 riveting nuts
- Return air version with air guide blades
- Product: SCHAKO **type DSX-PA-A**

### Accessories:

- with plenum box (-ASK) made of galvanised sheet steel and lateral connection piece and fixing lugs.
  - with a throttle damper (-DK) adjustable from the front in the plenum box for air volume regulation
- with rubber lip seal (-Gd)
- with thermal insulation
  - internal (-li)
  - external (-la)
- with M4 riveting nuts
- Corner bracket 90° (-EW) (supplied loose as standard)
- Mounting handle for connection element 2 (-FMG)

## Ceiling Slot Diffuser Model DSX

Ceiling slot diffuser **type DSX-PB**, for supply air, with support profile for ceiling tiles, suitable for installation in open or closed ceiling systems. Air outflow direction can be adjusted afterwards from below. Noise level and pressure loss remain constant in all air guide blade positions.

Slot diffuser consisting of extruded aluminium profile natural colour anodised E6/EV1 or painted to RAL 9010 (white).

Air guide elements made of plastic, colour RAL 9005 (black) or RAL 9010 (white).

TÜV tested according to **VDI 6022 Sheets 1+2** and **DIN 1946 Sheet 2**.

Product: SCHAKO **type DSX-PB-Z**

- Version (number of slots)
  - **Type DSX-PB1** (1-slot)
  - **Type DSX-PB2** (2-slot)
  - **Type DSX-PB3** (3-slot)
  - **Type DSX-PB4** (4-slot)
- Air guide element position:
  - **L I**, vertical throw
  - **L II L**, one-way horizontal throw on the left
  - **L II R**, one-way horizontal throw on the right
  - **L III**, alternate horizontal throw (standard)
- Length:
  - 500 mm
  - 1000 mm
  - 1500 mm
  - in band design with plenum box (-ASK) and concealed mounting (-VM)
  - Model without plenum box
    - as dummy piece (-BS)
      - with M4 riveting nuts
    - for operation with overflow air with mounting bracket (pair) (-BW)
      - with M4 riveting nuts
- Return air version with air guide blades

Product: SCHAKO **type DSX-PB-A**

### Accessories:

- with plenum box (-ASK) made of galvanised sheet steel and lateral connection piece and fixing lugs.
  - with a throttle damper (-DK) adjustable from the front in the plenum box for air volume regulation
  - with rubber lip seal (-Gd)
  - with thermal insulation
    - internal (-li)
    - external (-la)
  - with M4 riveting nuts
- with end piece (-ES3, pair) (supplied loose as standard), made of anodised aluminium in natural colour (E6/EV1) or painted aluminium in white (RAL 9010).
- Corner bracket 90° (-EW) (supplied loose as standard)
- Mounting handle for connection element 2 (-FMG)