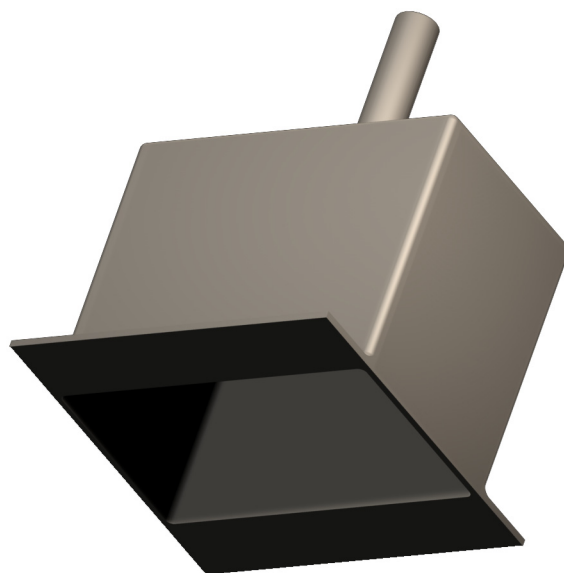




Pressure Measurement Box

DSX-XXL



SCHAKO KG
Steigstraße 25-27
D-78600 Kolbingen
Phone +49 (0) 74 63 - 980 - 0
Fax +49 (0) 74 63 - 980 - 200
info@schako.de
www.schako.de

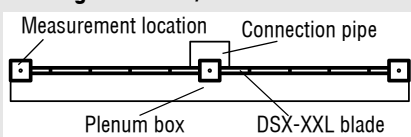
Pressure Measurement Box DSX-XXL

Volumetric flow measurement at the slot diffuser type DSX-XXL A (Pressure measurement box)

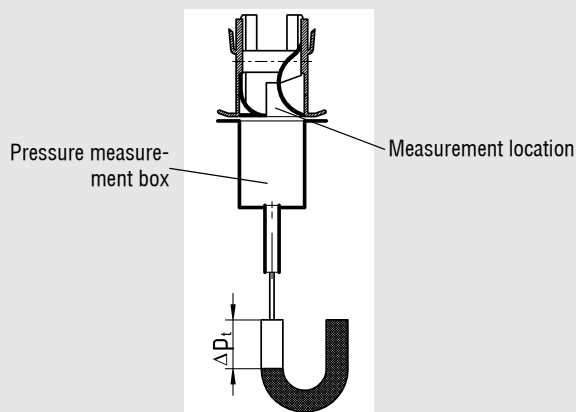
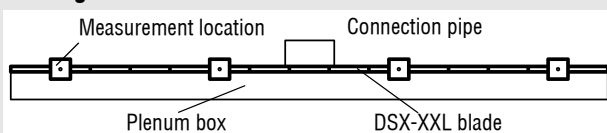
It is often no longer possible to perform a volumetric flow measurement at the connecting pipe in the ceiling cavity. The pressure measurement box is available to address this requirement. The pressure measurement box is connected to a suitable measurement instrument such as an inclined tube pressure gauge. The box is then pressed against the measurement points shown below of the diffuser and the pressure measured at the gauge. An average value is calculated from the sum of these four individual measurements. On the diagram, the volumetric flow can now be read.

Measurement points

for length 500mm/1000mm

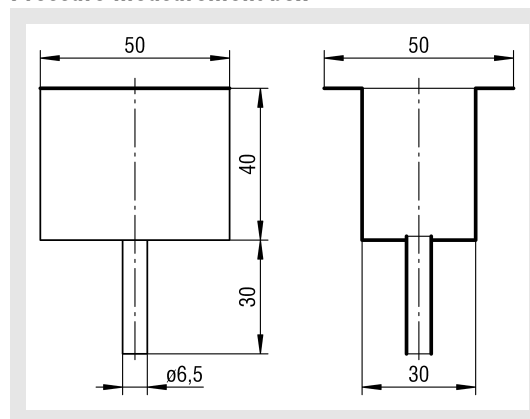


for length 1500mm



Dimensions

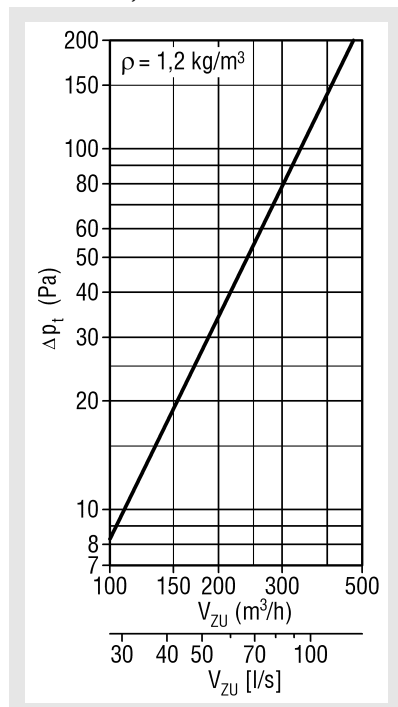
Pressure measurement box



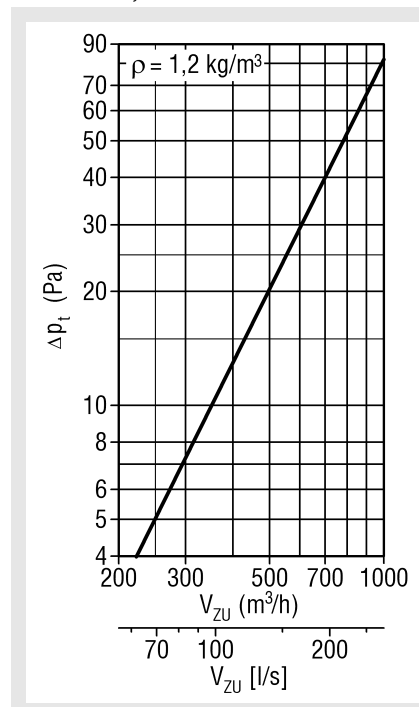
Pressure Measurement Box DSX-XXL

Pressure loss

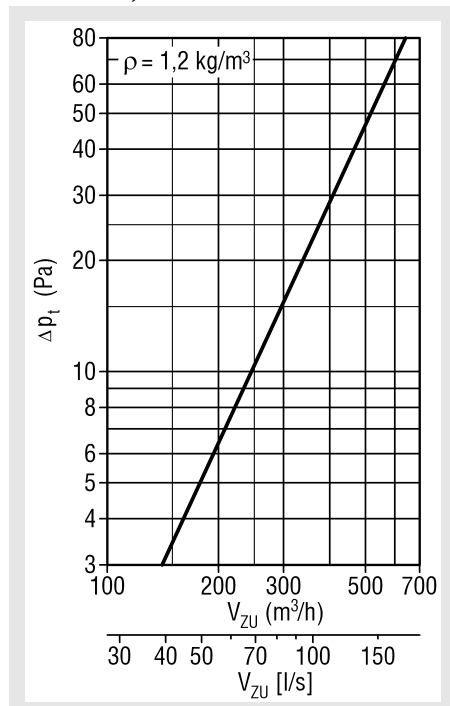
DSX-XXL-1, L=1000mm



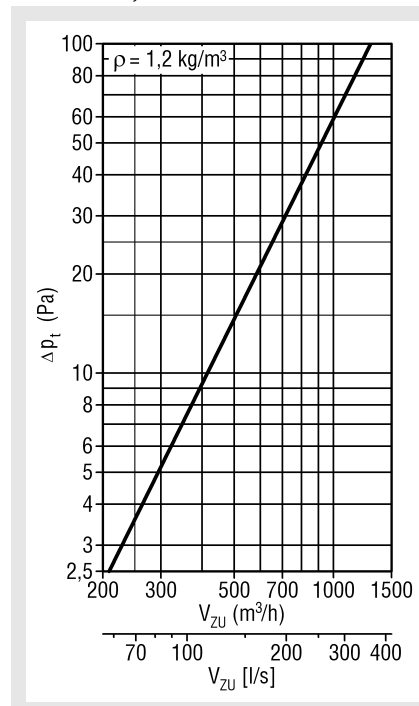
DSX-XXL-3, L=1000mm



DSX-XXL-2, L=1000mm



DSX-XXL-4, L=1000mm



Legend

- Δp_t (Pa) = Pressure loss
- V_{ZU} (m³/h) = Supply air volume
- V_{ZU} [l/s] = Supply air volume
- ρ (kg/m³) = Density