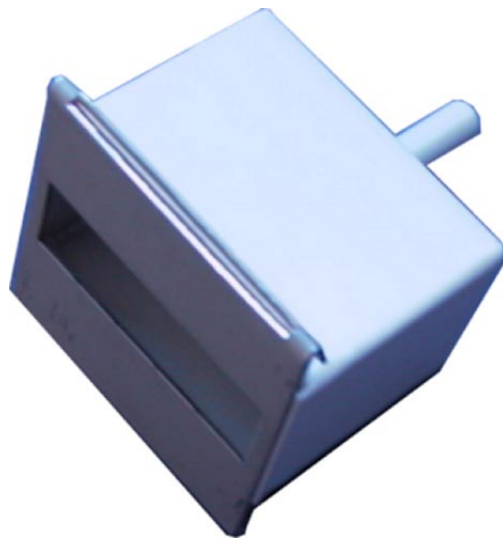




Pressure Measurement Box

DSX



SCHAKO KG
Steigstraße 25-27
D-78600 Kolbingen
Phone +49 (0) 74 63 - 980 - 0
Fax +49 (0) 74 63 - 980 - 200
info@schako.de
www.schako.de

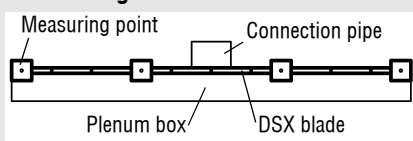
Pressure Measurement Box DSX

Volumetric flow measurement at the slot diffuser type DSX (pressure measurement box)

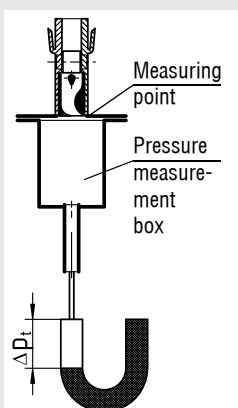
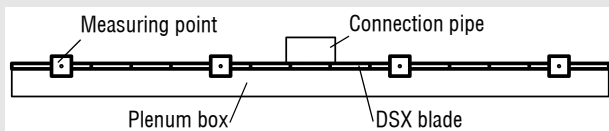
It is often no longer possible to perform volumetric flow measurement at the connecting pipe in the ceiling cavity. The pressure measurement box is available to address this requirement. The pressure measurement box is connected to a suitable measurement instrument such as an inclined tube pressure gauge. The box is then pressed onto the measurement points of the diffuser shown below, and the pressure is measured at the gauge. The mean value is calculated from the total of these four individual measurements. Using the diagram, the volumetric flow can now be read.

Measuring points

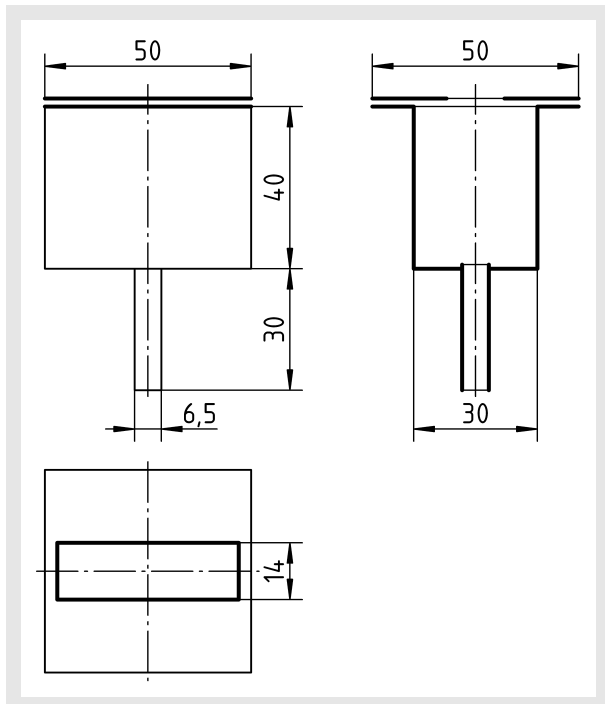
for the length 1000 mm



for the length 1500 mm



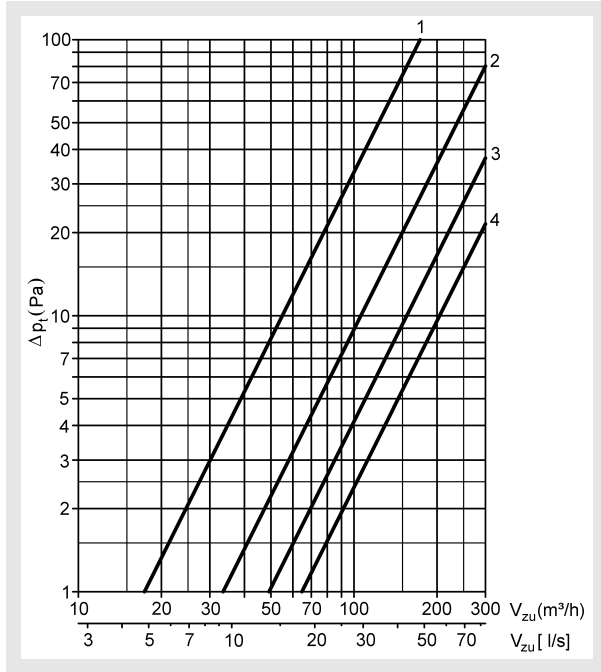
Pressure Measurement Box



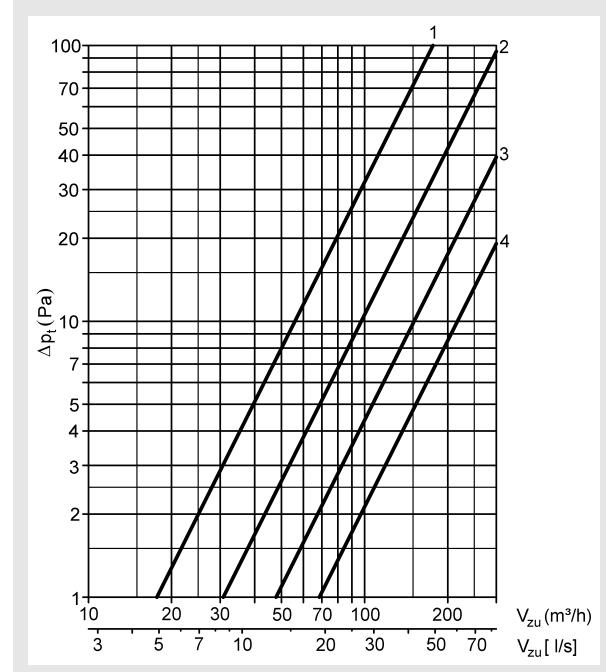
Pressure Measurement Box DSX

Pressure loss

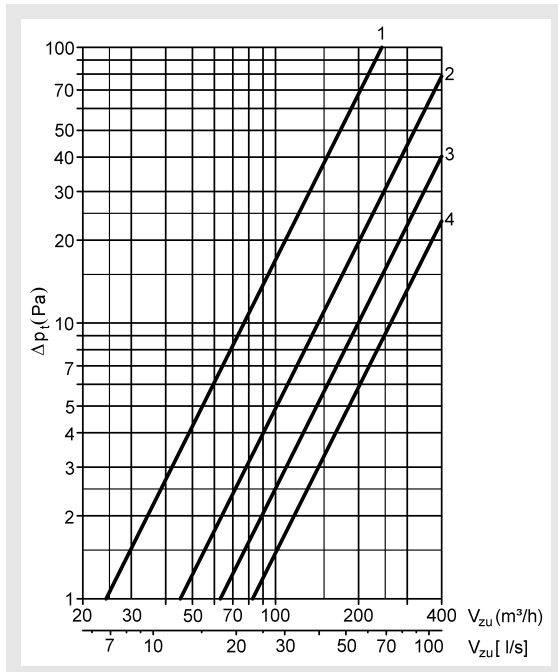
DSX 1- to 4- slot, 1000mm
Blade position II horizontal



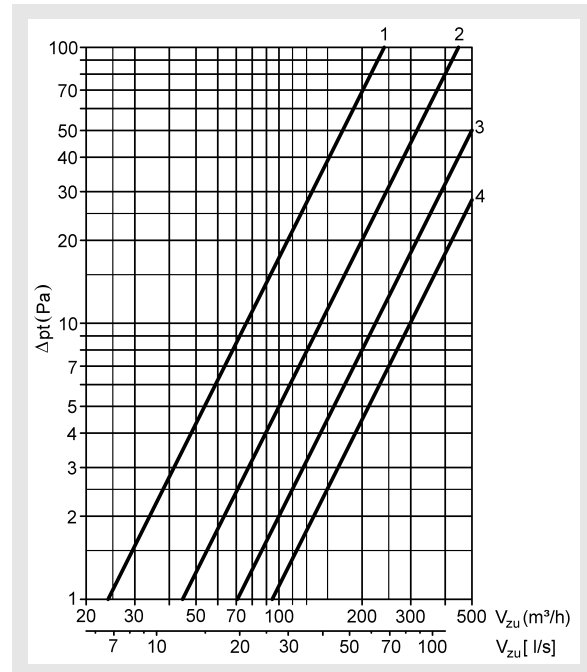
DSX 1- to 4- slot, 1000mm
Blade position I vertical



DSX 1- to 4- slot, 1500mm
Blade position II horizontal



DSX 1- to 4- slot, 1500mm
Blade position I vertical



Δp_t (Pa) = Pressure loss
 V_{supply} (m³/h) = Supply air volume
 V_{supply} [l/s] = Supply air volume